

## CHAPTER 17



*Photo: Route 112 Bridge in Huntington, MA*

### ENVIRONMENTAL CONSULTATION

Regional Transportation Plans must provide information on the efforts to consult with state and local agencies responsible for environmental, land use, and preservation in the development of the RTP. In addition, the RTP must include a discussion of the types of potential environmental mitigation activities and potential areas to carry out these activities. This chapter demonstrates how these requirements have been integrated into the RTP for the Pioneer Valley Metropolitan Planning Organization.

#### **A. ENVIRONMENTAL CONSULTATION**

The Pioneer Valley Metropolitan Planning Organization must consult “as appropriate” with state and local agencies responsible for land use management, natural resources, environmental protection, conservation, and historic preservation to develop the long range transportation plan. PVPC scheduled an environmental consultation meeting on Tuesday May 28, 2019. Invitations were sent to a number of federal, state, and local agencies to review the draft transportation improvement projects included as part of the RTP. PVPC staff was available for questions and

comments from 1:00 PM to 4:00 PM. Transportation Improvement projects were mapped over several environmental maps including:

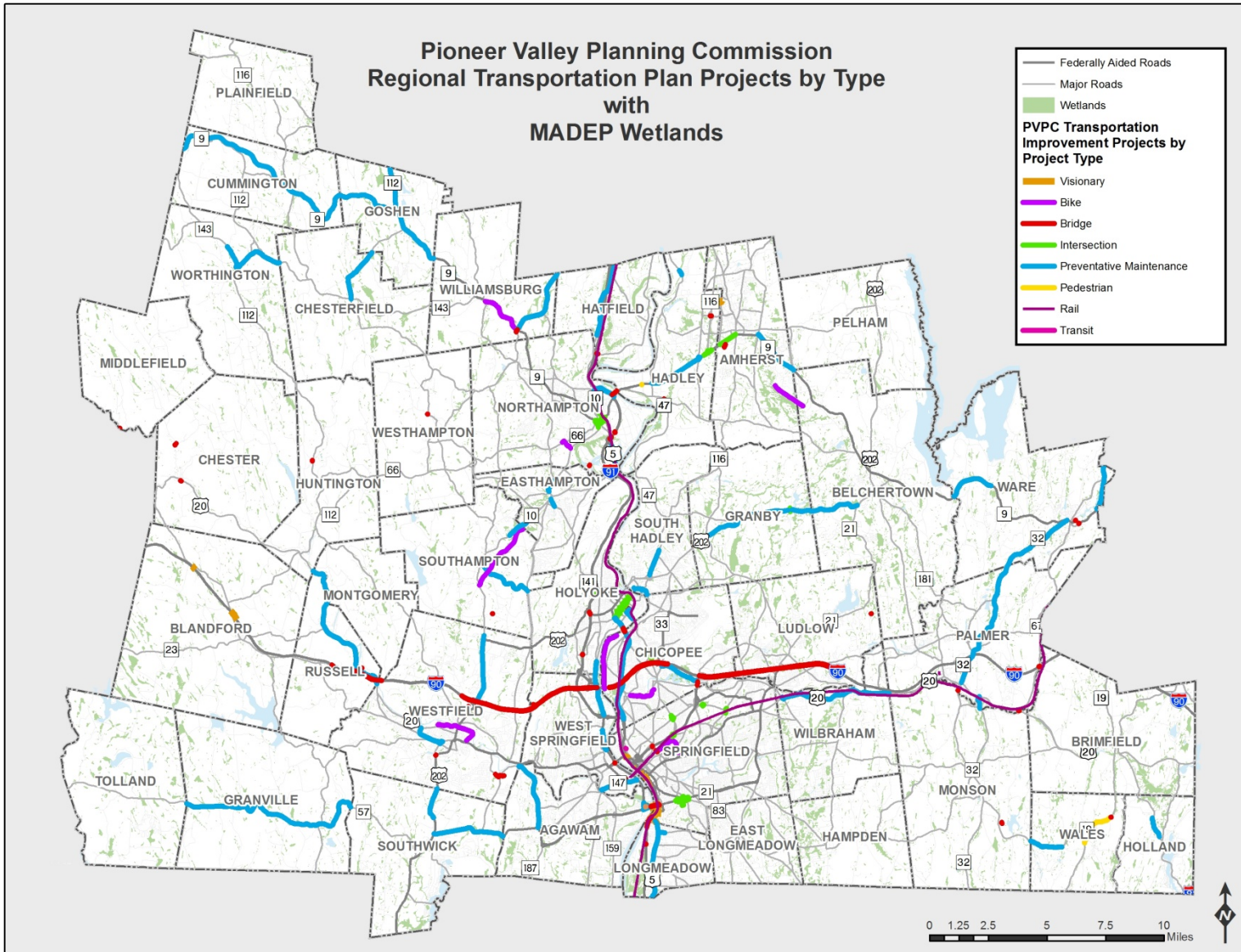
- Habitat – Road linkage importance for regional habitat connectivity.
- Habitat – Link importance for regional habitat connectivity.
- Wetlands
- 500 Year Flood
- 100 Year Flood Zones
- Valley Vision Priority Development Areas
- Valley Vision Priority Protection Areas
- Massachusetts Historic Commission Historic Inventory Areas
- Environmental Justice Minority Census Block Groups
- Environmental Justice Low Income Census Block Groups
- Disabled Residents Aged 65+ Census Block Groups
- Disabled Residents Aged 20-64 Census Block Groups

An online interactive version of this map is located through the following link: <https://tinyurl.com/pvpctrpupdate2019>. A copy of the complete project listing and Map Key is included as part of the Appendix to the RTP.

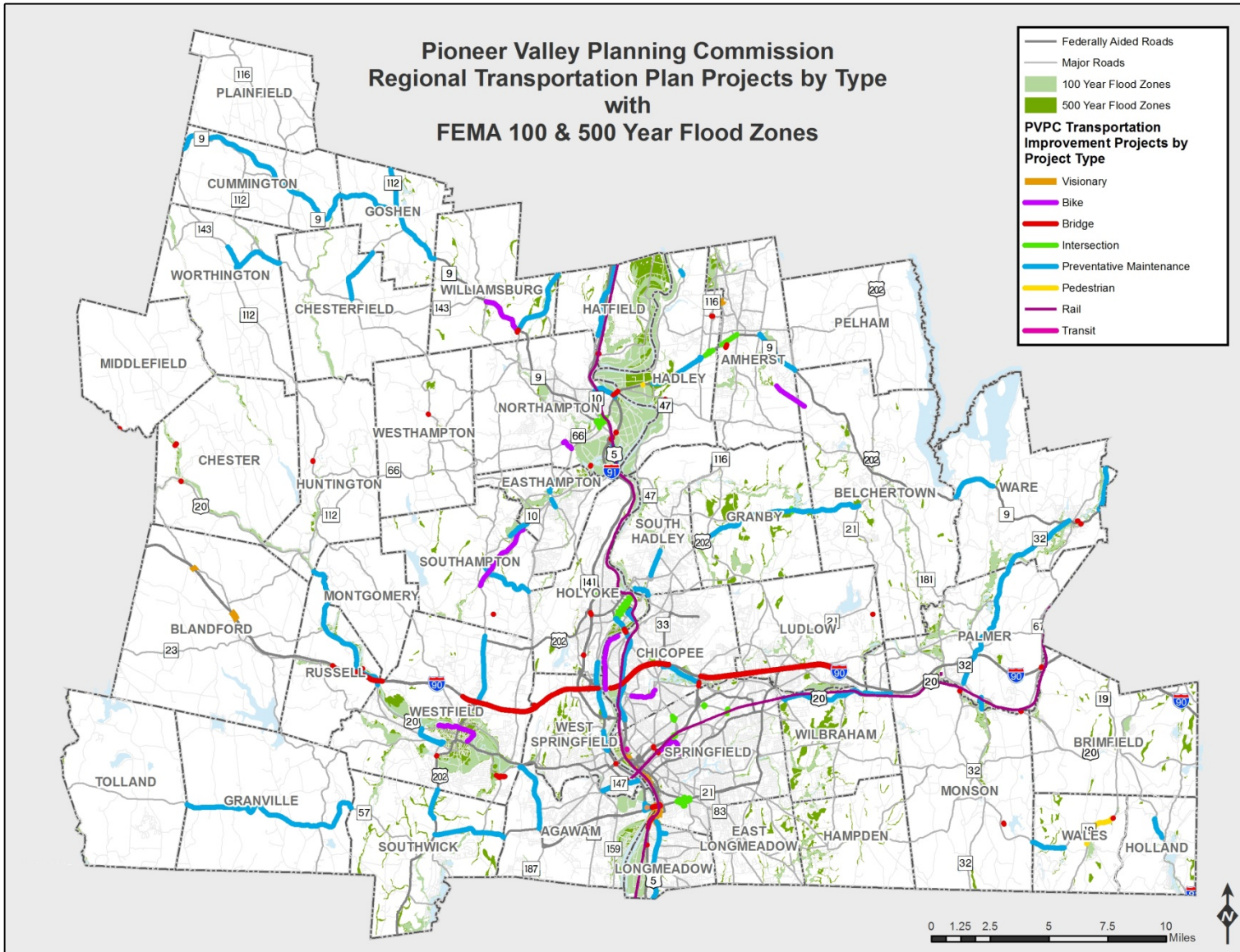
Two of these maps are shown in Figures 17-1 and 17-2. A complete list of agencies invited to participate in the Environmental Consultation is presented in Table 17-1. Each of these agencies will also be sent a draft copy of the RTP. Comments received as part of Environmental Consultation have been summarized in Chapter 3 of the RTP.



Figure 17-1 – RTP Projects and Massachusetts Wetlands



**Figure 17-2 – RTP Projects with 100 and 500 Year Flood Zones**



**Table 17-1 – RTP Environmental Consultation Mailing List**

American Rivers	Massachusetts Historic Commission
Arise for Social Justice	Partners for a Healthier Community
Chicopee 4Rivers Watershed	Pioneer Valley Asthma Coalition
City of Chicopee	Pioneer Valley JTC Members
City of Holyoke	Pioneer Valley MPO Members
City of Northampton	Pioneer Valley EJ and Title VI mailing list
City of Springfield	Stavros
City of Westfield	Stockbridge-Munsee Community
Connecticut River Watershed Council	The Hill Town Trust
Co-op Power	The Kestrel Trust
Environmental Protection Agency	The Nature Conservancy
Home Builders and Remodelers Association of Western MA	Town of Belchertown
Massachusetts Association of Conservation Commissions	Town of Hadley
Mass Audubon	Town of South Hadley
MassDEP	Trustees of Reservations
Massachusetts Division of Fisheries and Wildlife	University of Massachusetts
Massachusetts DCR	US Department of Agriculture
Massachusetts Division of Ecological Restoration	Westfield River Watershed Association
Massachusetts Department of Public Health	Westfield River Wild and Scenic Committee
MassDOT	

In addition to the above list, a meeting notice for the Environmental Consultation was posted on the PVPC website and in the Republican (the local newspaper) in both English and Spanish.

