

Merrick and Memorial Neighborhood Study

5/14/2014 Public Meeting



Study Area



April 9 Public Meeting Comments Summary

- Pedestrian Safety - “A Walking Neighborhood”
 - Pedestrian traffic is very difficult
 - A need for better sidewalks on Union Street
 - New sidewalks and street trees on Memorial Avenue from Baldwin Street easterly (pedestrian fatalities mentioned)
 - Some people walk in the road instead of on the sidewalk – especially on Main Street
 - A very difficult area to ride a bicycle
 - Pedestrians use a “short-cut” down the Route 5 southbound exit ramp at the Memorial Bridge rotary and climb a fence to access Bridge Street
 - Many pedestrians walk long distances to access the Eastern States
 - A need for better access to the Memorial School
- Traffic
 - The Main/Memorial intersection is very bad and promotes high travel speeds
 - Speeding
 - River/Baldwin Street intersection is too congested, confusing and has poor turning radii
 - Truck traffic in areas where it shouldn’t be
 - Vehicles do not comply with the Memorial School pick up/drop off plan
 - Poor access management
 - People exiting the Doctor’s offices at 373 Park Street cause chaos at the intersection of South Boulevard with Park Street and River Street

April 9 Public Meeting Comments Summary (cont.)

- Parking
 - Need on-street parking on Union and Main Streets
 - Lack of parking in Globe/Railroad/Bridge Street area
 - Management and enforcement of existing regulations needed
 - Existing parking regulations are not business friendly
 - The parking lot across from 380 Union Street is used by local residents during snow clean-up
- Aesthetic improvements desired
 - Unattractive gateways into the city – rotaries, Agawam Bridge
 - A need for more parks and playgrounds
 - Public infrastructure investments (sidewalks, trees, lighting, benches, parks)
 - Town Common was mentioned
 - Need street tree replacement (from Church Street south)
 - Many tornado damaged building are still vacant and have not been repaired
 - Regulatory/enforcement measures imposed on businesses and residences
 - Elimination of illicit and inappropriate activity at existing parks and playgrounds
- Redevelopment
 - No current development plans for the Eastern States as the existing parking area is critical to the site.

Summary of Recommendations



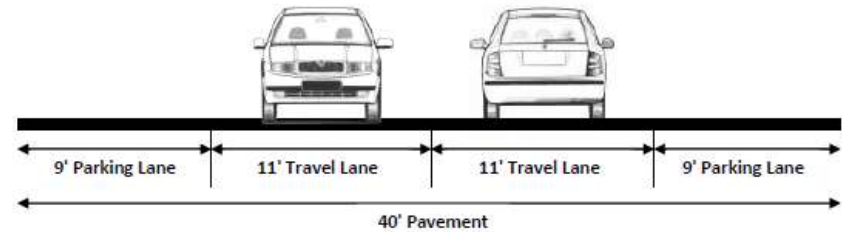
Recommendations

- Recommendations handout summarizing a number of potential improvements to be considered for the study area
 - Recommendations have been summarized by location when practical.
 - A corresponding “Summary Map” was developed to assist in identifying the location of proposed recommendations.
- Responsible Party - the lead party for implementing the recommendation.
- Priority
 - Immediate Priority – 6 months to 1 year implementation
 - Short Term – 1 to 3 year implementation
 - Long Term - >3 year implementation
- Cost
 - Low Cost = < \$500,000
 - Medium Cost = \$500,000 - \$2,000,000
 - High Cost = > \$2,000,000
- Annual Maintenance – This column identifies if the recommendation requires a dedicated annual maintenance program

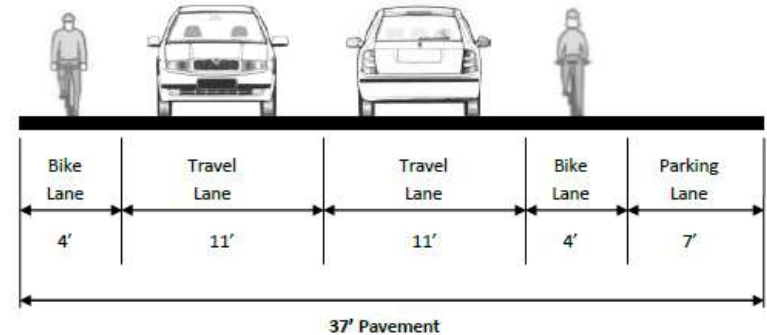
Complete Streets

- Complete Streets enhance opportunities for all transportation modes and users
- Treatments Consist of
 - Pavement markings
 - Plantings
 - Improved Pedestrian Crossings
 - Enhanced Bus Stops
- Narrow lanes encourage lower travel speeds
- Complete Streets are unique

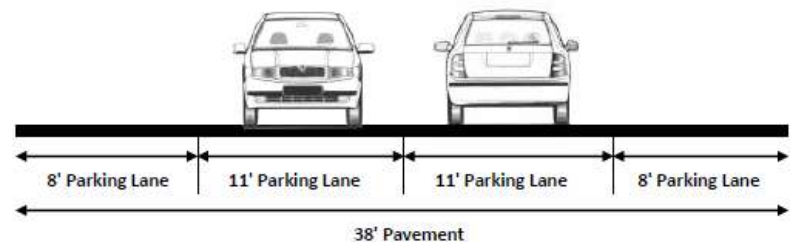
Sample Union Street Roadway Cross Section



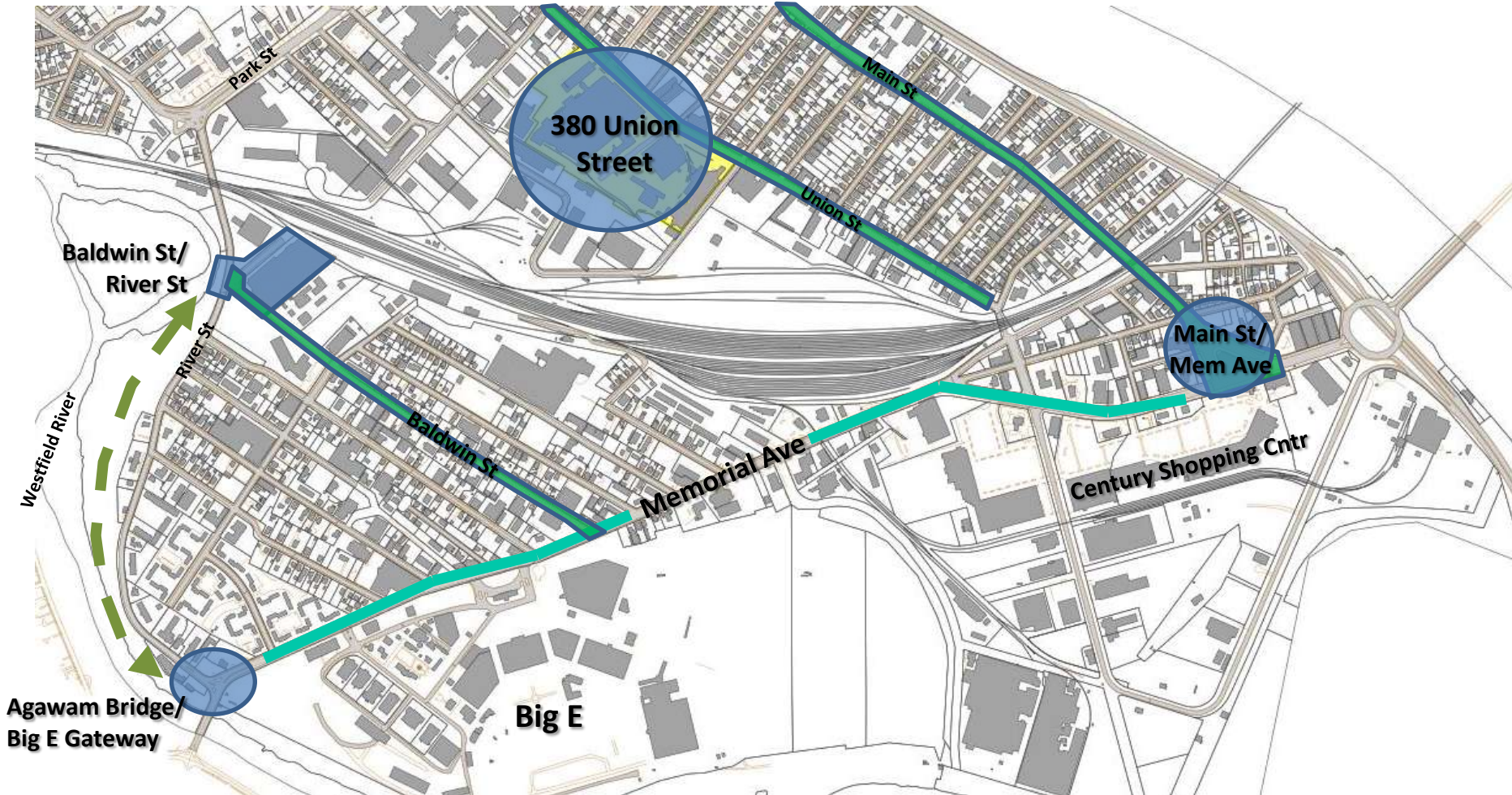
Sample Baldwin Street Roadway Cross Section



Sample Main Street Roadway Cross Section



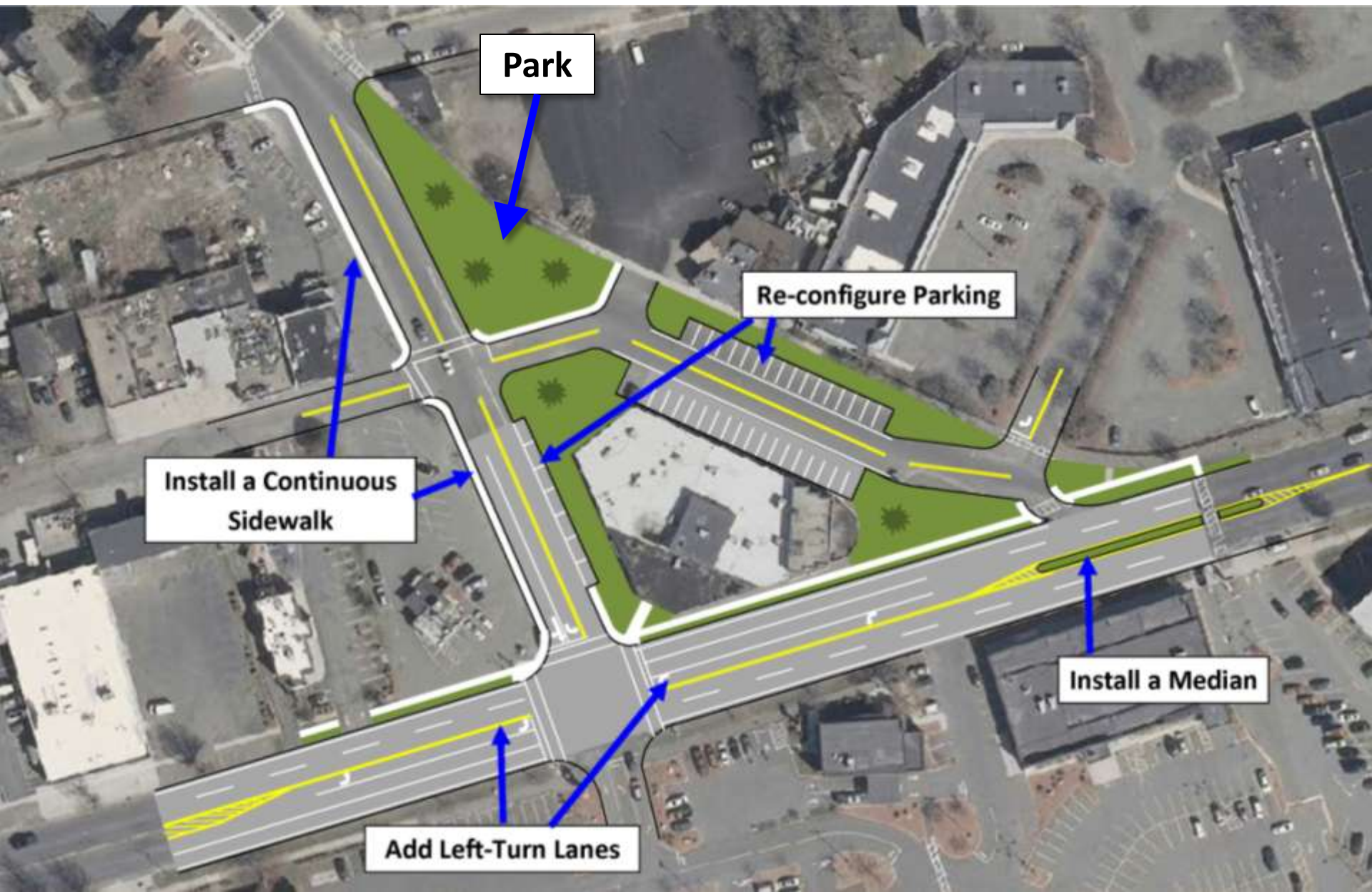
Merrick/Memorial TCSP Opportunity Focus Areas



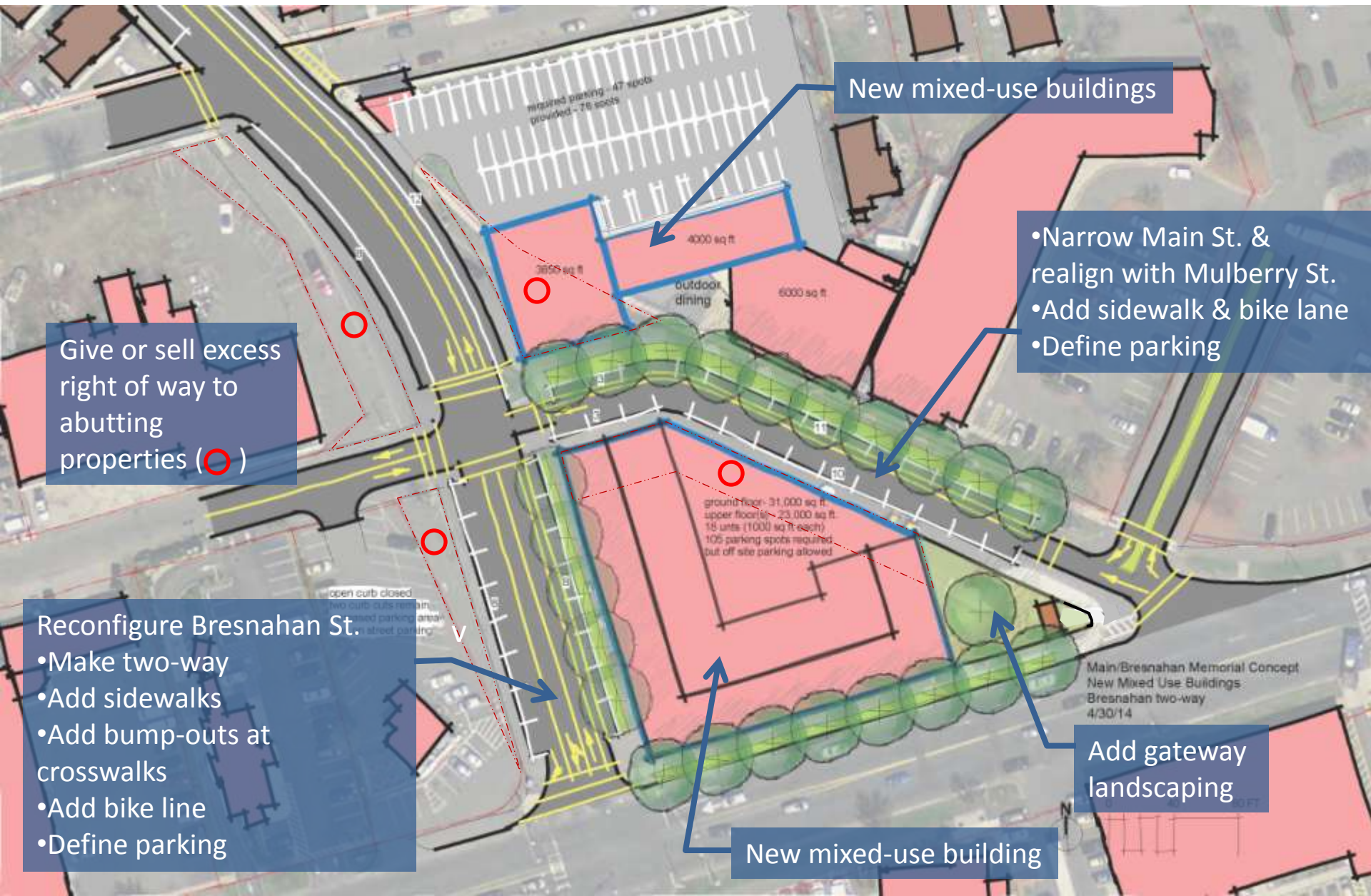
Gateway Recommendations: Main at Memorial



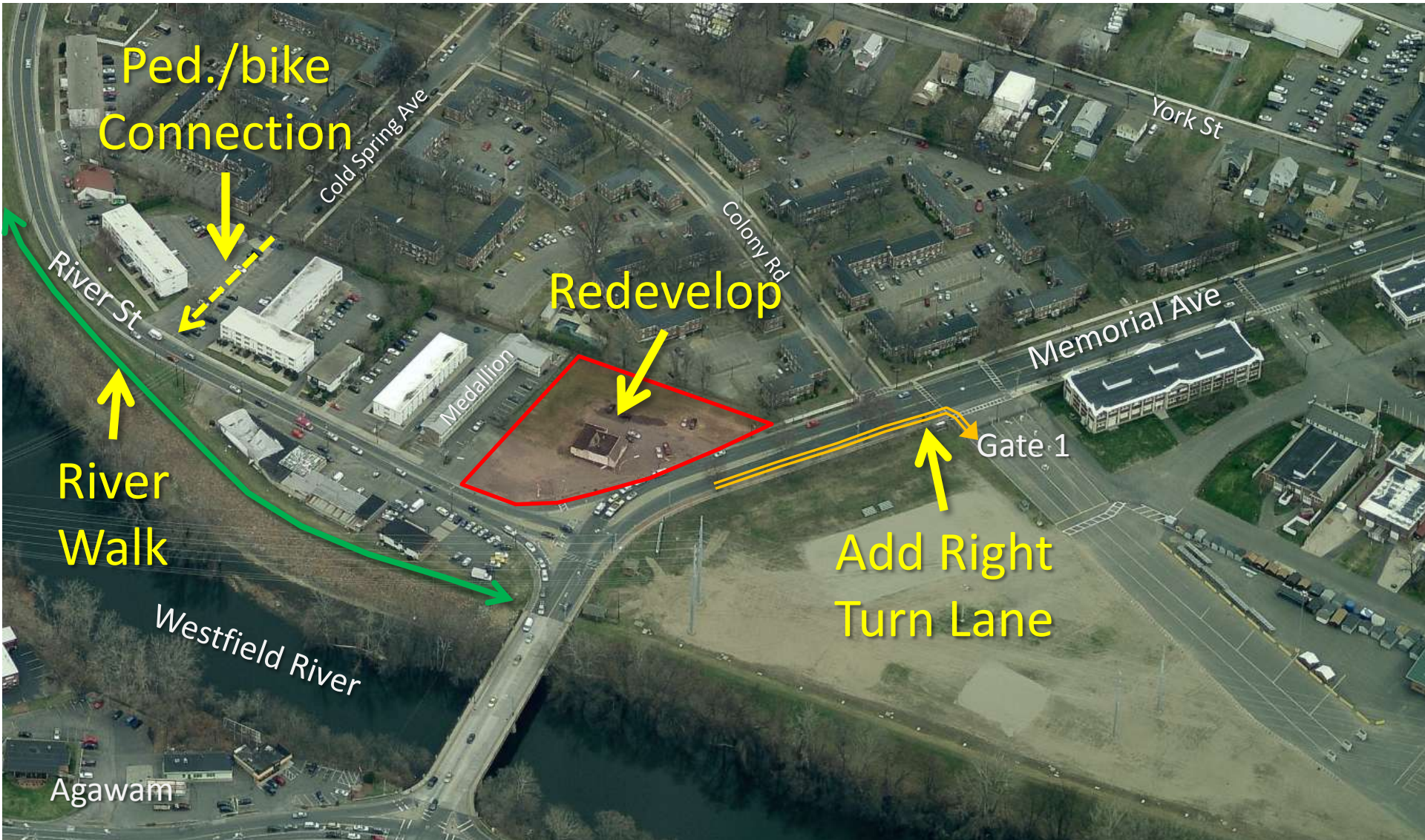
Main at Memorial: Gateway Area Concept 1



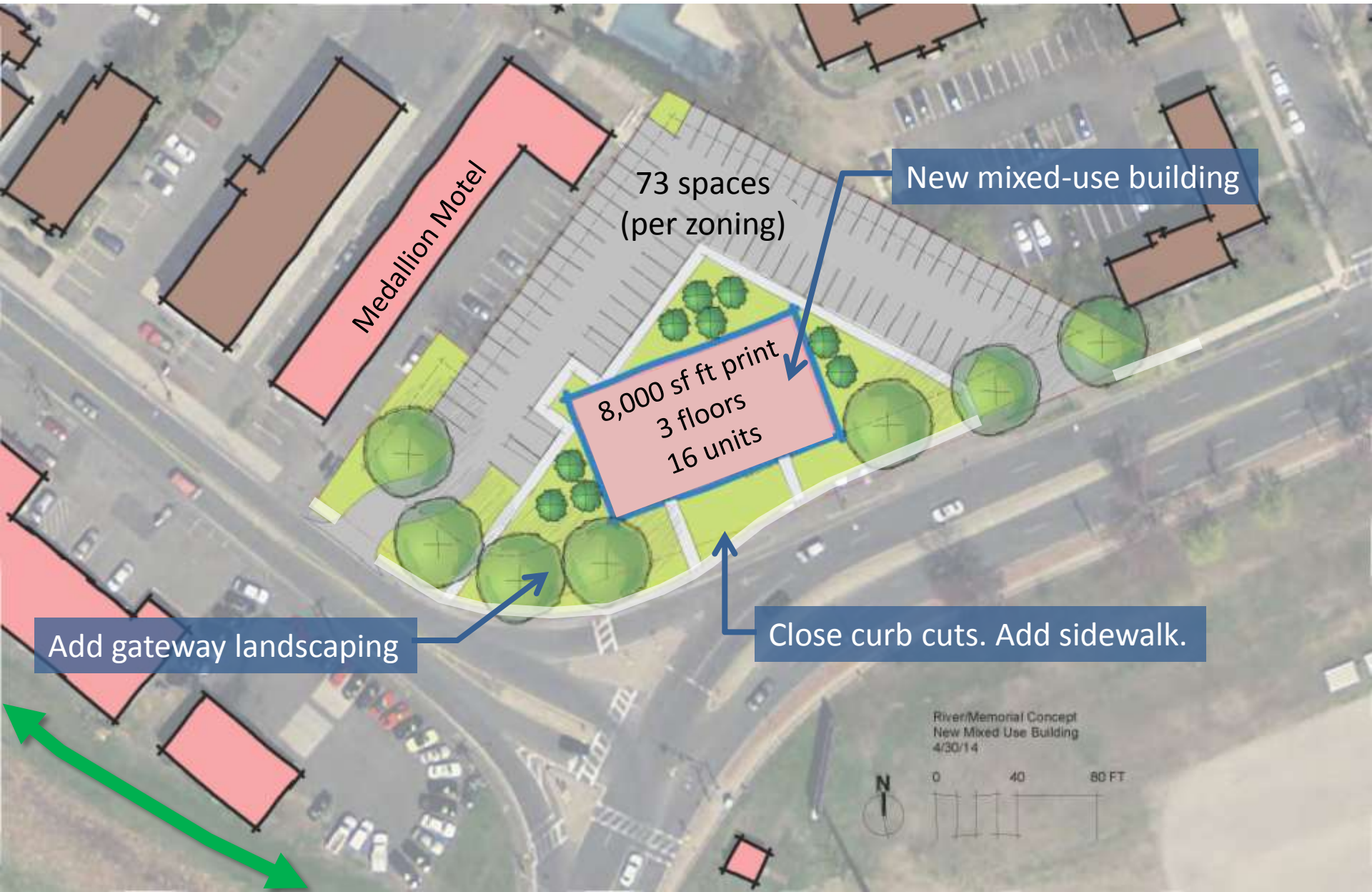
Main at Memorial: Gateway Area Concept 2



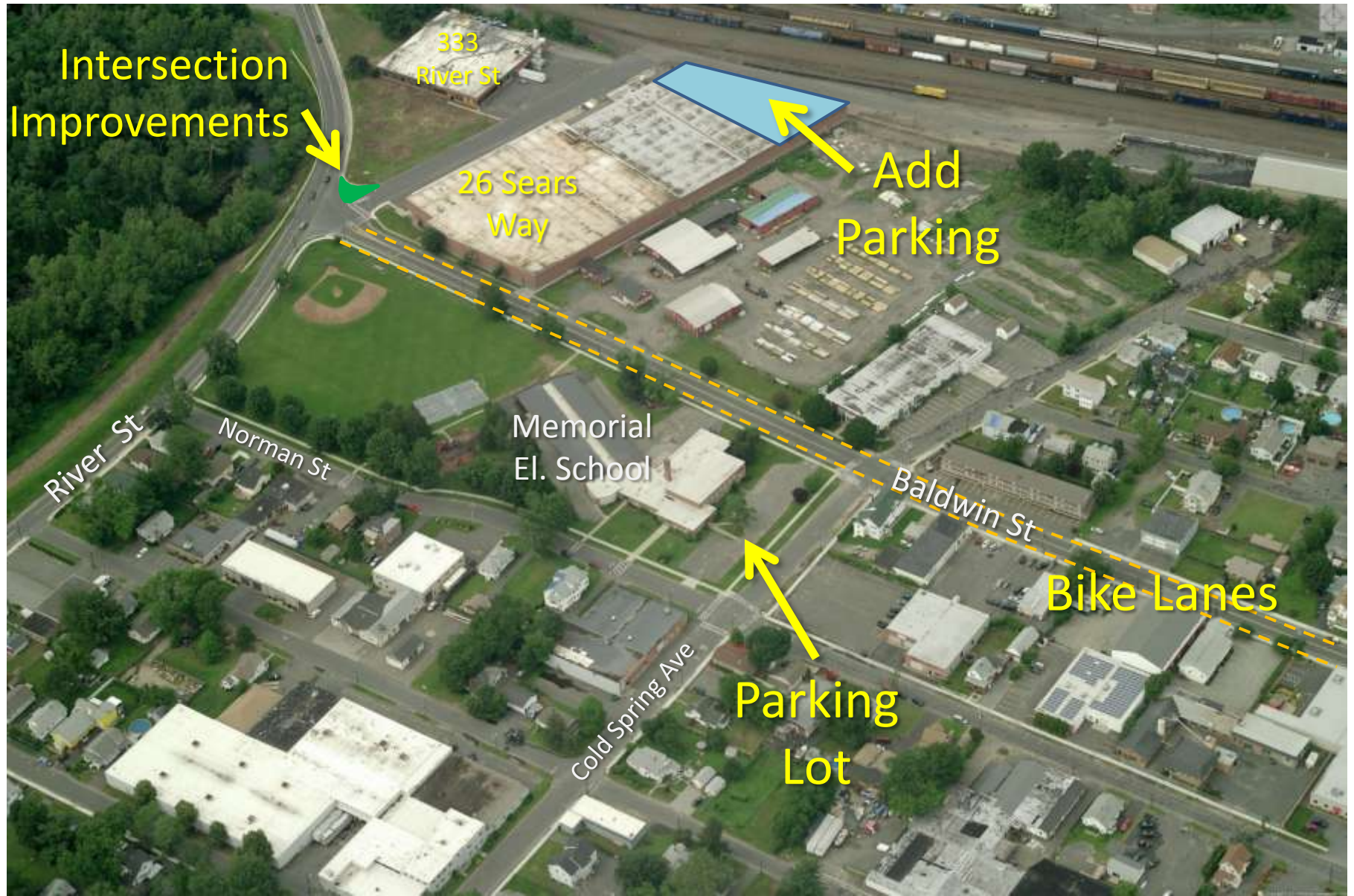
Gateway Recommendations: River at Memorial



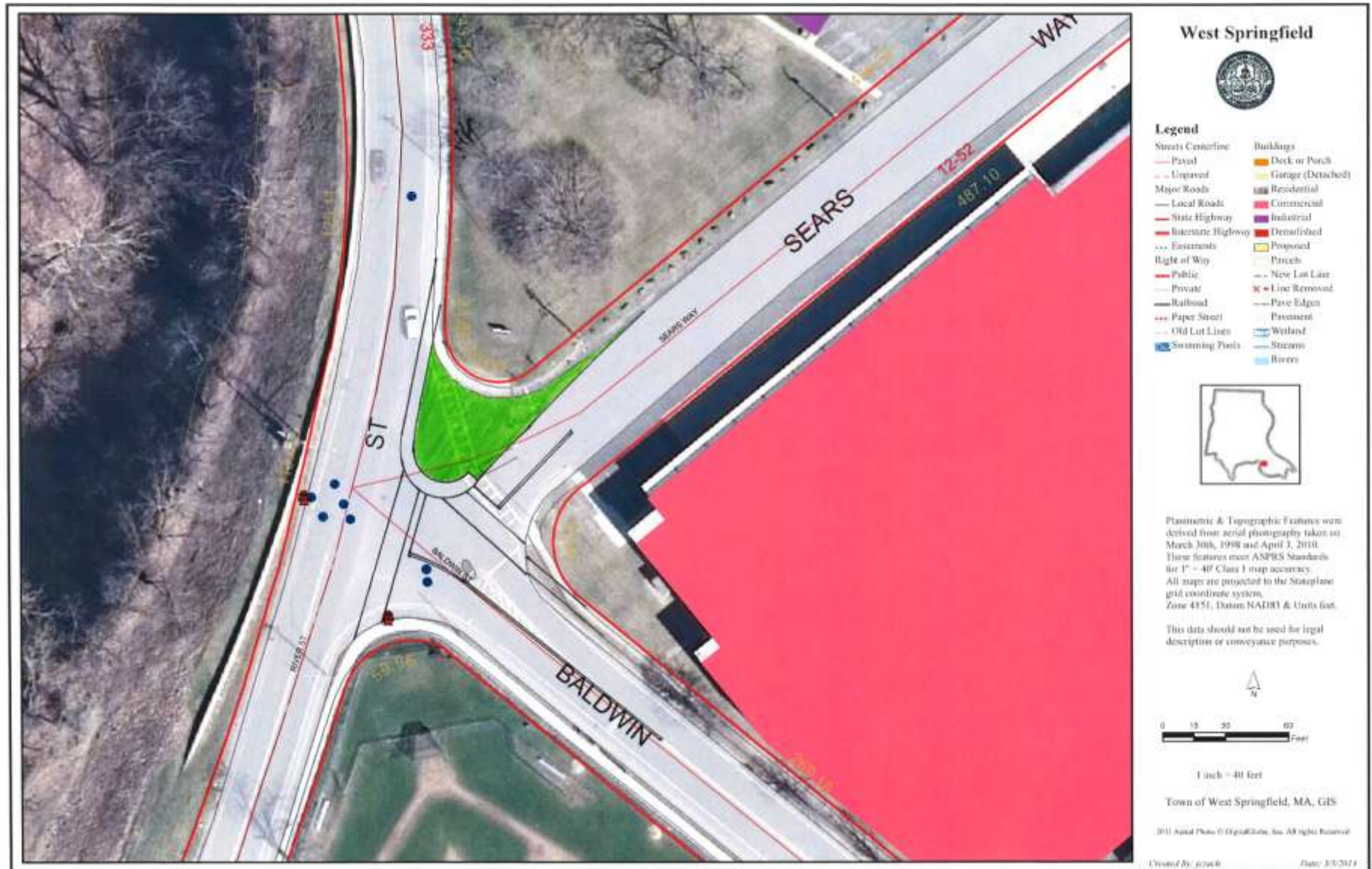
River at Memorial: Gateway Area Concept



Gateway Recommendations: Baldwin St at River St

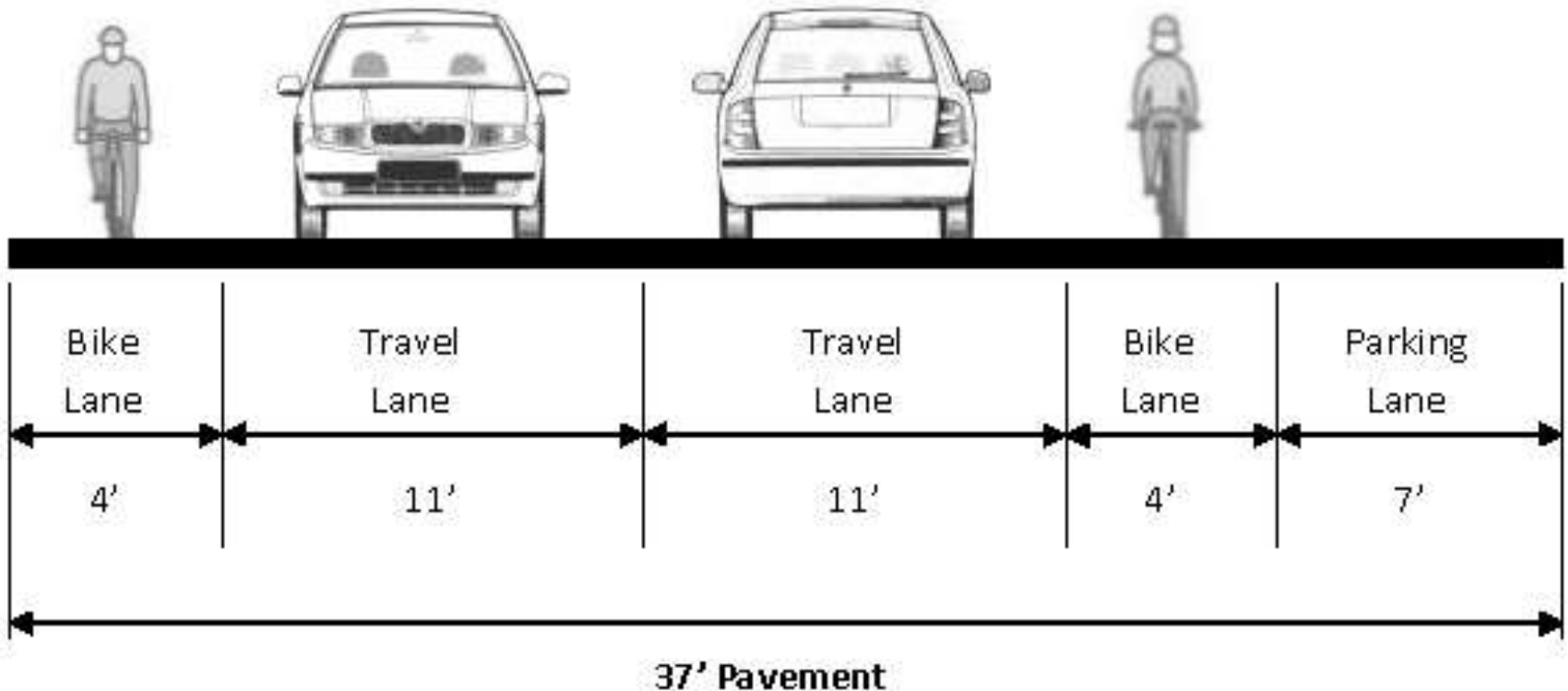


Baldwin at River: Gateway Area Concept



Baldwin at River: Gateway Area Concept

Sample Baldwin Street Roadway Cross Section



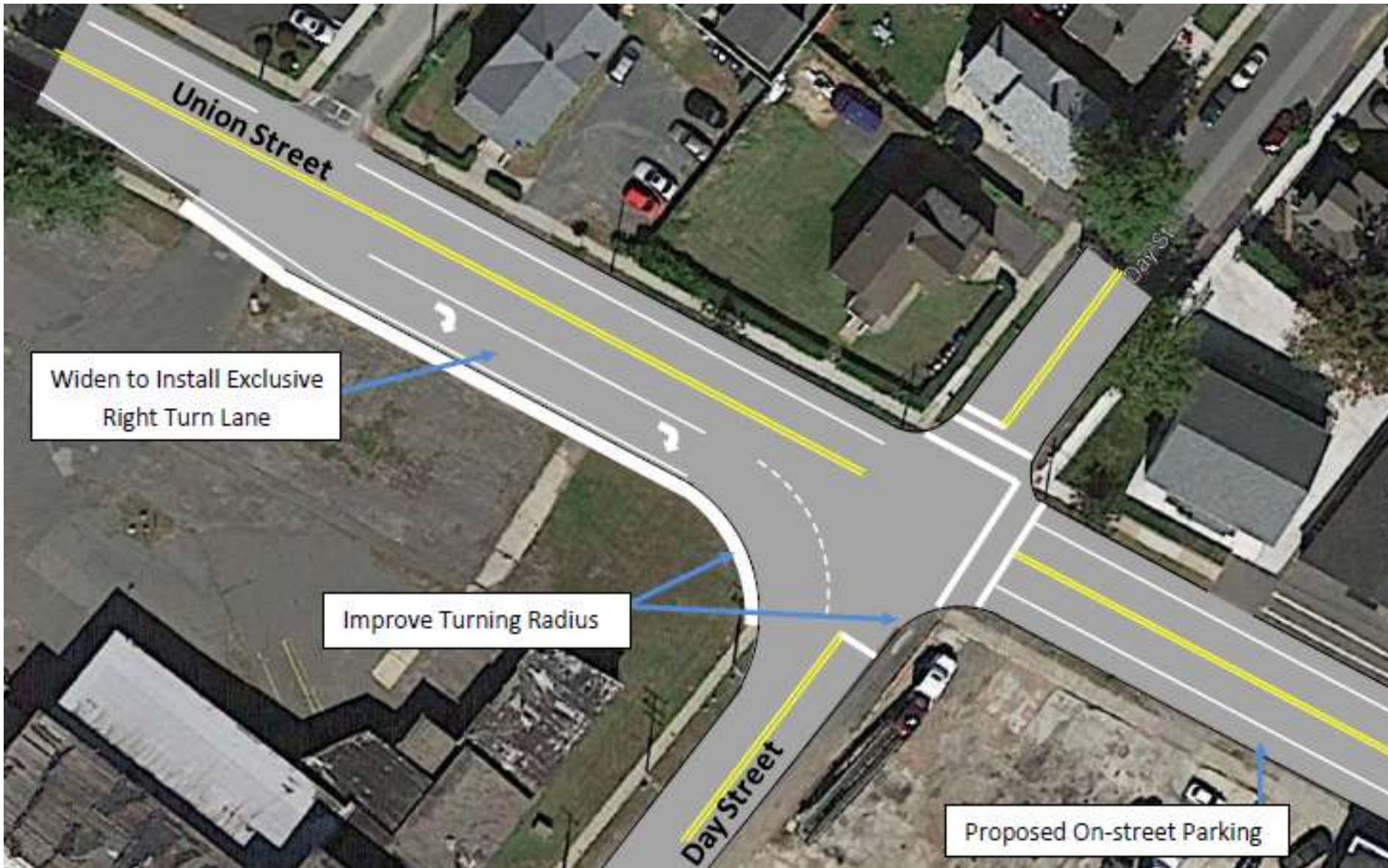
North End Bridge and Memorial Bridge Rotaries



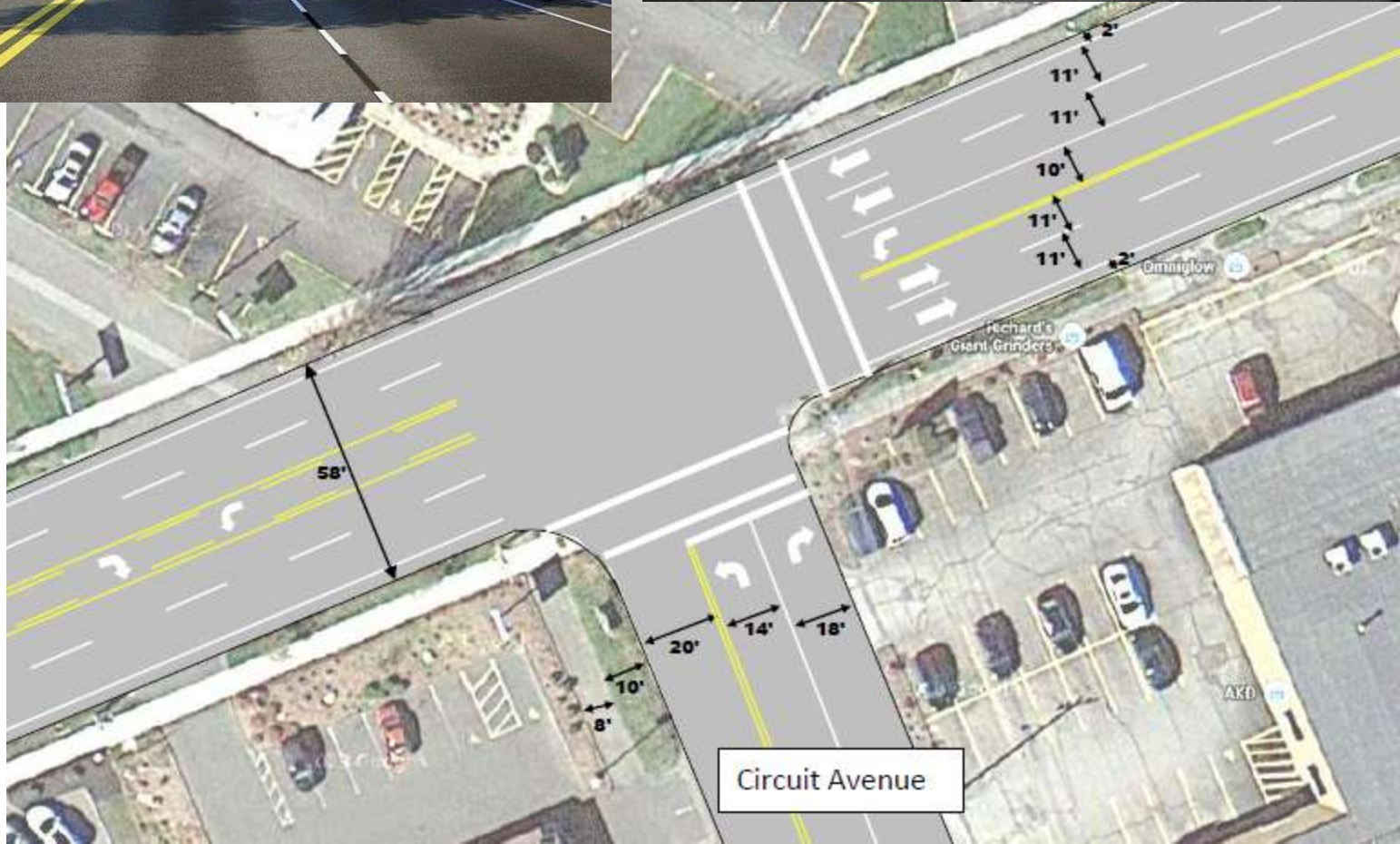
Notes:

- 76 - Single car crash, stolen car, hit curb and yield sign, then abandoned vehicle
- 78 - Vehicle hit another parked vehicle
- 86 - Vehicle hit a dog on a crosswalk
- 87 - Fatality. Motorcycle hit guardrail at bottom of off-ramp and was run over by another vehicle
- A,B - Vehicle on Park Avenue ran a red light
- C - Vehicle on Park Avenue reported ran red light, then hit and run. Officer suspects false police report based on evidence at scene

Union Street at Day Street



Memorial Avenue Boulevard Concepts



Area Recommended for Rezoning to Residential



Please Send Your Comments

- Handouts and Presentation available Thursday May 15, 2014 at www.pvpc.org
- Draft Report available beginning Monday May 19, 2014
 - Available online and at the library
- 30 day public participation period through June 19, 2014
 - Submit written comments to:

Pioneer Valley Planning Commission
60 Congress Street – Floor 1
Springfield, MA 01104-3419
Attention: Gary Roux
gmroux@pvpc.org

END