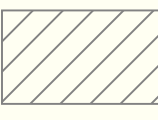

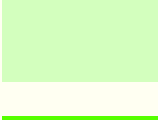



# Valley Vision Update Priority Protection Areas

Prepared by the Pioneer Valley Planning Commission, 2011

## Priority Protection Areas

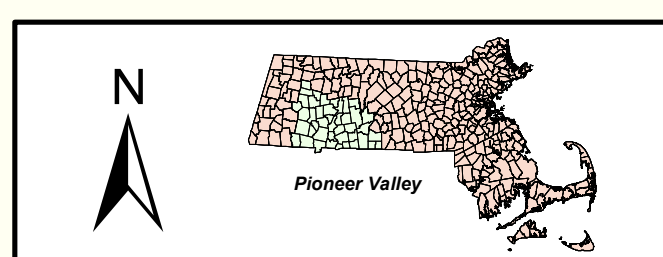
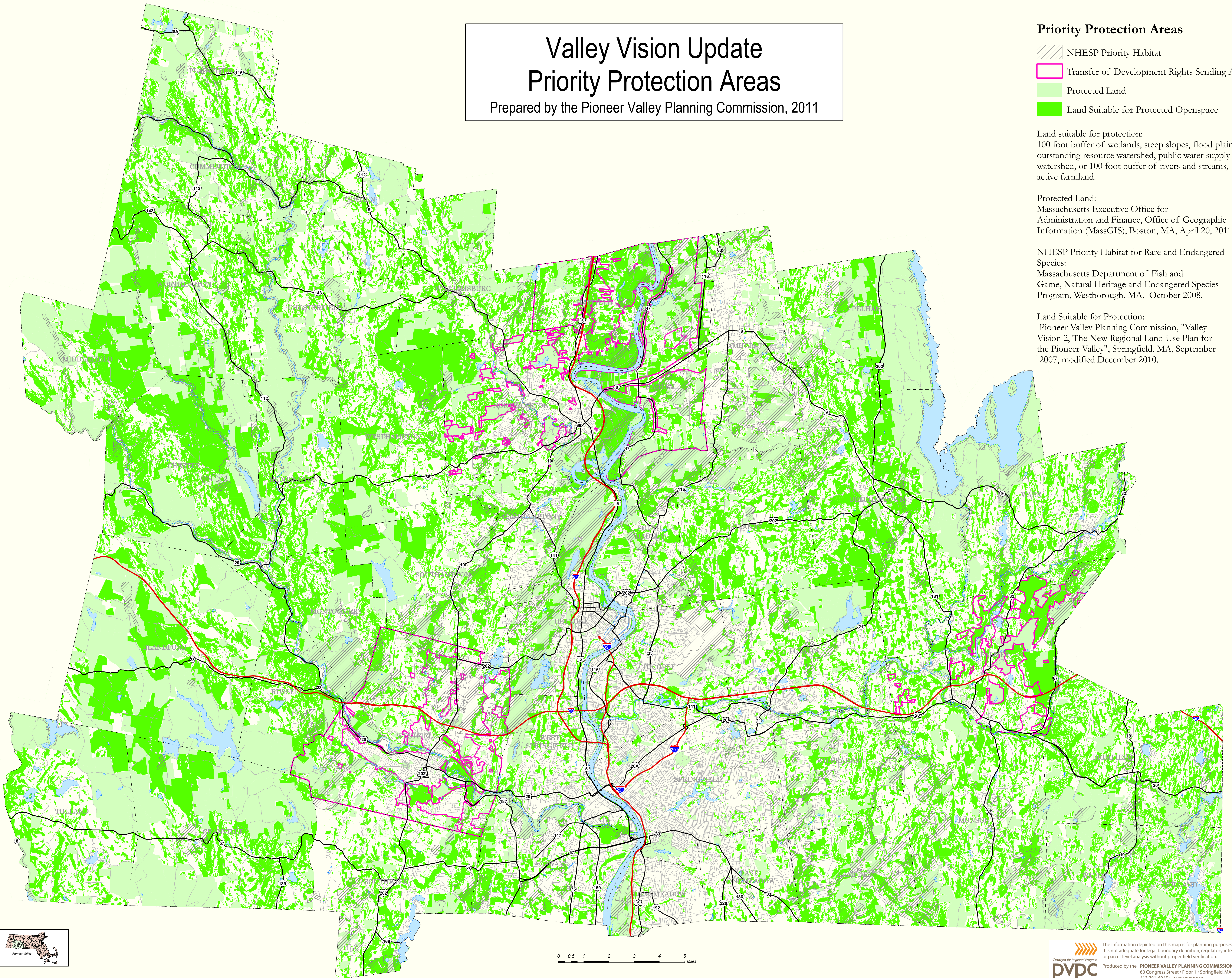
-  NHESP Priority Habitat
-  Transfer of Development Rights Sending Area
-  Protected Land
-  Land Suitable for Protected Openspace

Land suitable for protection:  
100 foot buffer of wetlands, steep slopes, flood plain outstanding resource watershed, public water supply watershed, or 100 foot buffer of rivers and streams, active farmland.

Protected Land:  
Massachusetts Executive Office for Administration and Finance, Office of Geographic Information (MassGIS), Boston, MA, April 20, 2011

NHESP Priority Habitat for Rare and Endangered Species:  
Massachusetts Department of Fish and Game, Natural Heritage and Endangered Species Program, Westborough, MA, October 2008.

Land Suitable for Protection:  
Pioneer Valley Planning Commission, "Valley Vision 2, The New Regional Land Use Plan for the Pioneer Valley", Springfield, MA, September 2007, modified December 2010.



0 0.5 1 2 3 4 5 Miles