

# Merrick/Memorial Neighborhood TCSP Study Community Meeting #1: Baseline Conditions April 9, 2014



# What is a TCSP Study?



## Transportation Community, and System Preservation

1. Improve the efficiency of the transportation system
2. Reduce environmental impacts of transportation
3. Reduce the need for costly future public infrastructure investments
4. Ensure efficient access to jobs, services and centers of trade
5. Examine development patterns and identify strategies to encourage compatible private sector development patterns.

# Purpose of This Meeting

1. Present Existing Baseline Conditions
2. Listen to community input about:
  - How well is transportation working?
  - What do you like about the homes and businesses in the Merrick and Memorial neighborhoods today?
  - What would you like your neighborhood to look like in 20 years?

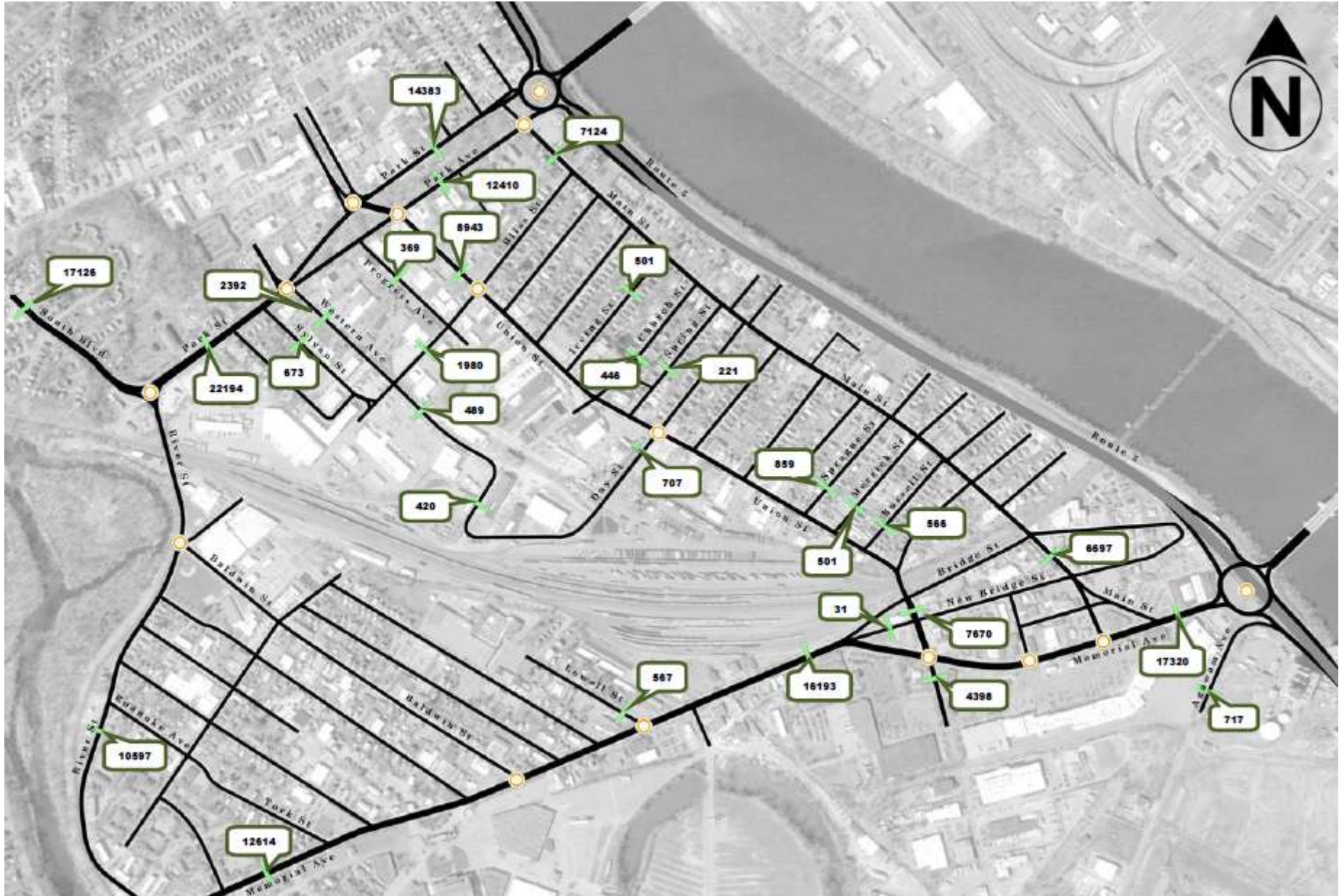
# Study Area



# Data Collection

- Average Daily Traffic – 29 locations
- Peak Hour Traffic – 16 Intersections
- Percentage of Heavy Vehicles
  - Arrival/Departure data
- Vehicle Travel Speeds
- Existing Transit Service
  - Bus Stops – Boarding/Alighting Data
- Crash Experience
- Parking Restrictions
- Roadway Geometry Data
- Intersection Operations
- Existing Signs

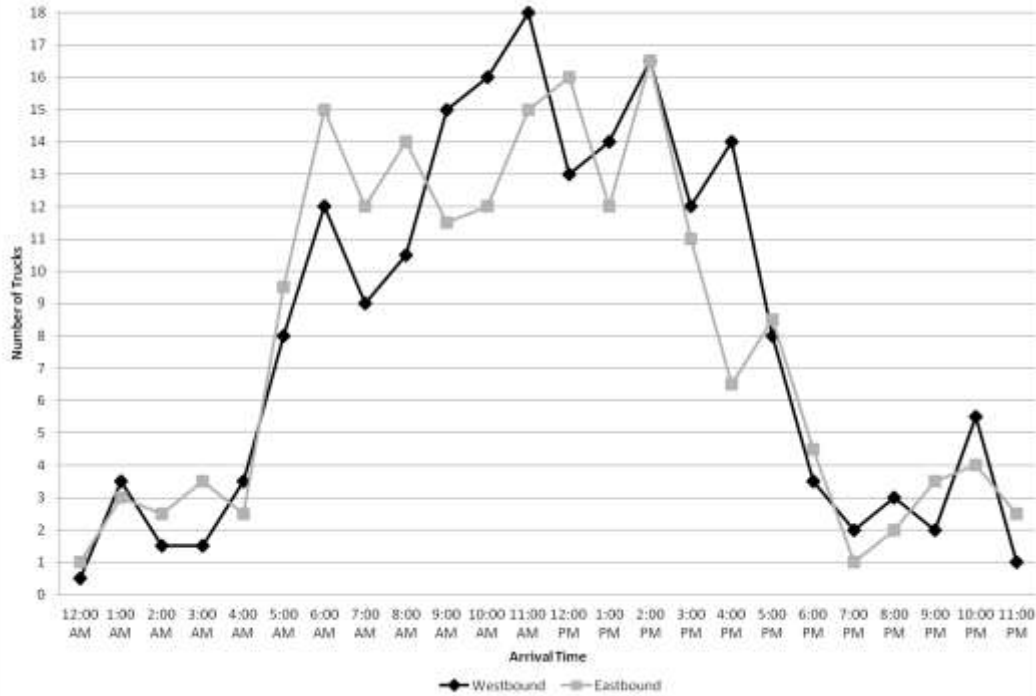
# Daily Traffic



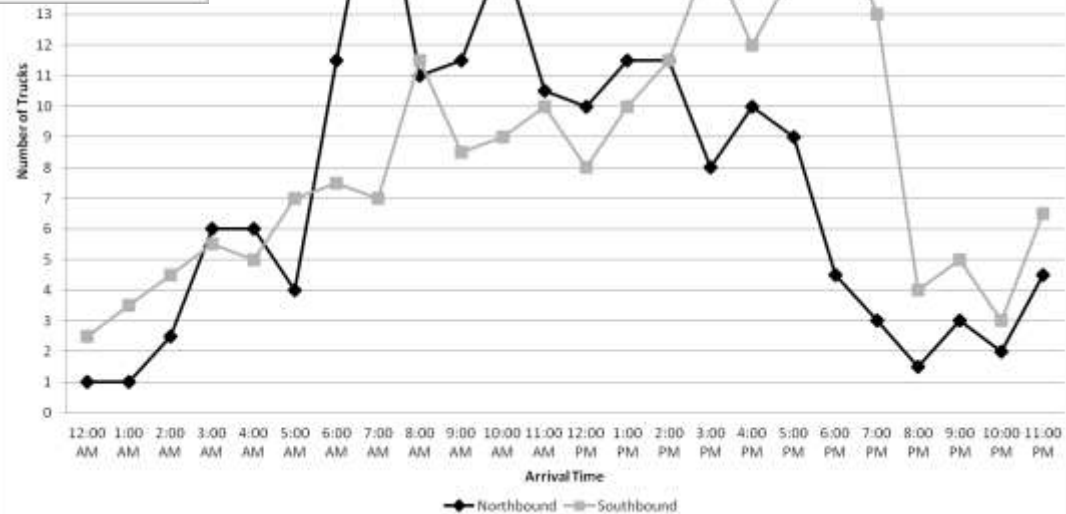


# Heavy Vehicle Traffic

## Day Street west of Union



## Western Avenue south of Park Avenue

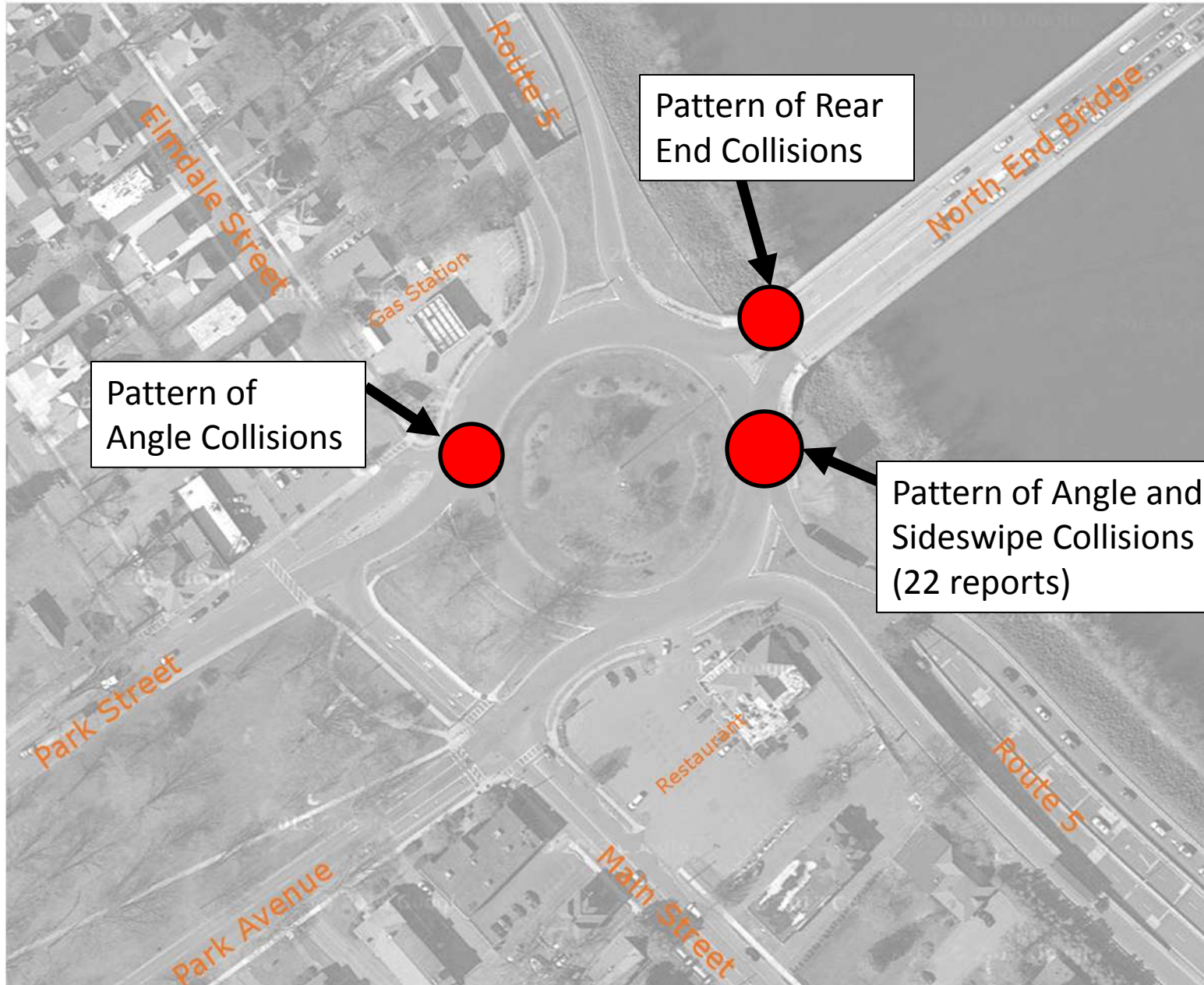




# Safety

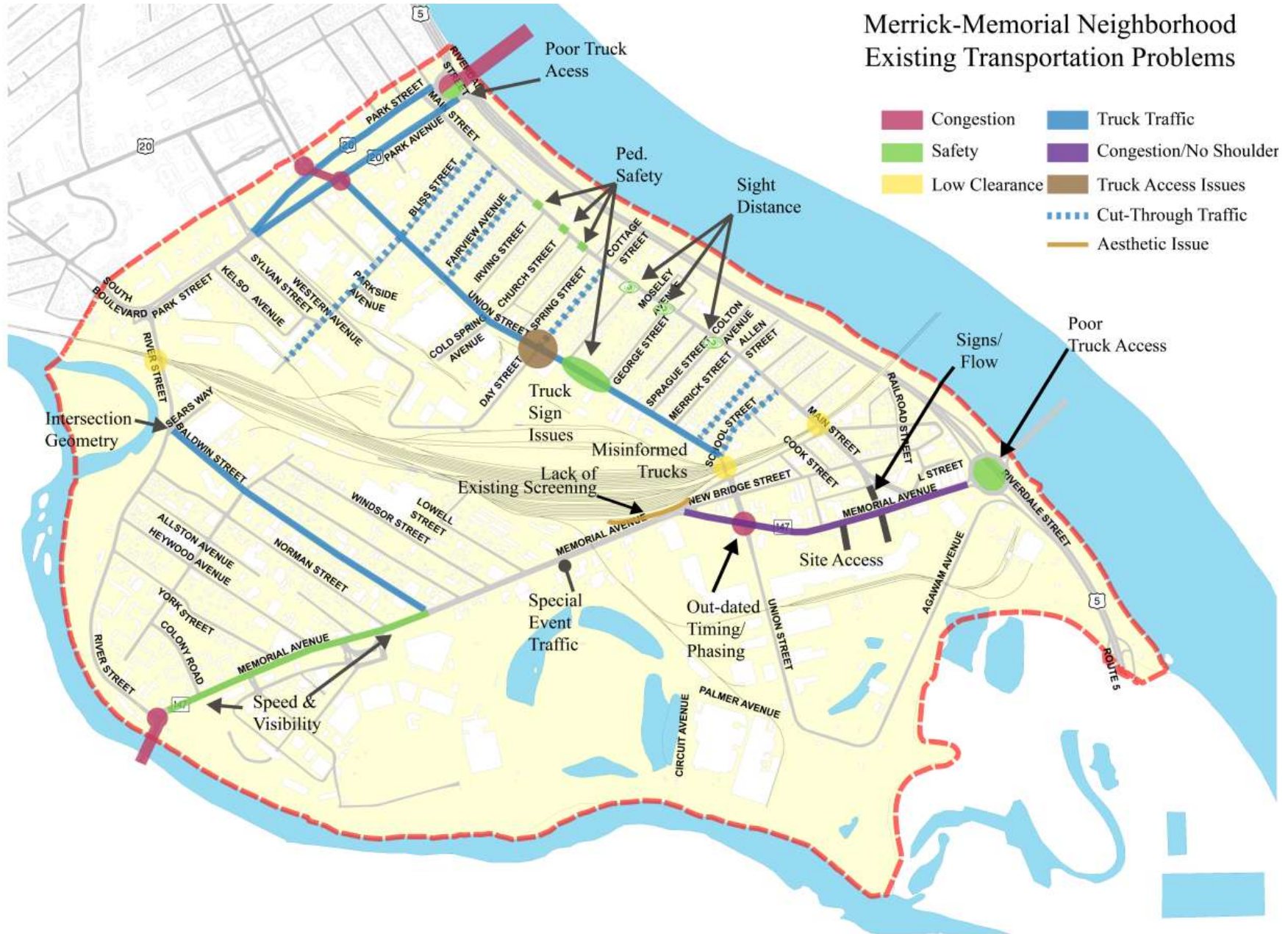
- West Springfield Police provided a summary of intersection crash data for the 2010-2012 calendar years to identify any common conditions and possible causes.
- 278 total crashes
- Nearly 25 percent of all crashes results in a personal injury.
- Most crashes occurred under dry roadway conditions indicating that weather did not contribute to the crash.
- Six intersections averaged five or more crashes per year over the three year analysis period.
- The North End Bridge rotary has the highest average of 29 crashes per year along with 1.8 crashes per million entering vehicles (MEV)
- The Memorial Bridge rotary has an average of 14 crashes per year and a 0.96 crashes per MEV.
- Park Avenue at Union Street and Elm Street averages 13.6 crashes per year and 0.92 crashes per MEV.
- Collision Diagrams were developed to assist in identifying crash trends.

# North End Bridge Rotary

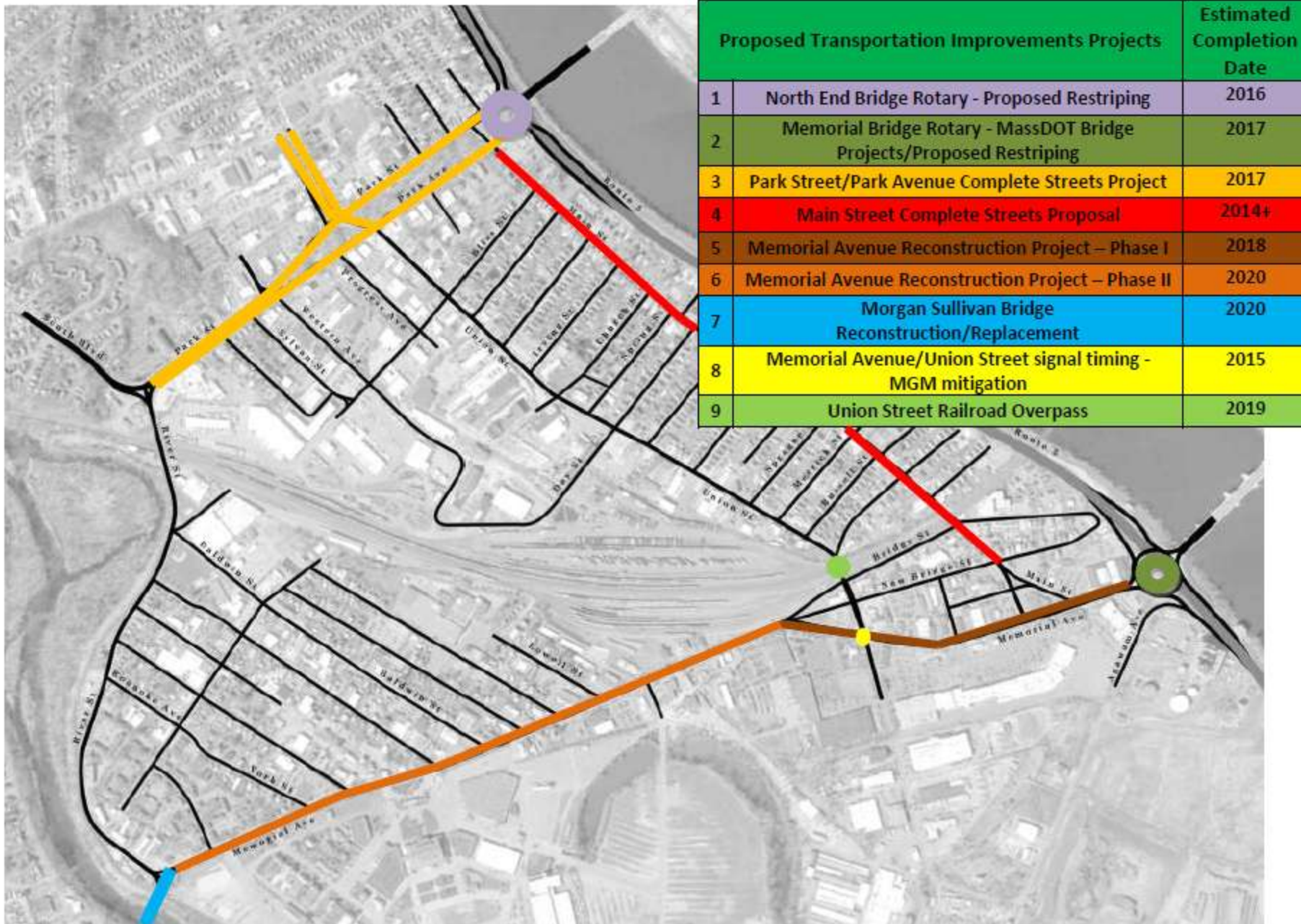


# Existing Transportation Concerns

Merrick-Memorial Neighborhood  
Existing Transportation Problems



# Proposed Transportation Improvements

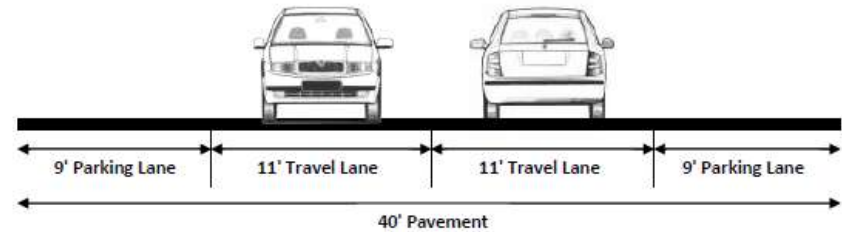


Proposed Transportation Improvements Projects		Estimated Completion Date
1	North End Bridge Rotary - Proposed Restriping	2016
2	Memorial Bridge Rotary - MassDOT Bridge Projects/Proposed Restriping	2017
3	Park Street/Park Avenue Complete Streets Project	2017
4	Main Street Complete Streets Proposal	2014+
5	Memorial Avenue Reconstruction Project – Phase I	2018
6	Memorial Avenue Reconstruction Project – Phase II	2020
7	Morgan Sullivan Bridge Reconstruction/Replacement	2020
8	Memorial Avenue/Union Street signal timing - MGM mitigation	2015
9	Union Street Railroad Overpass	2019

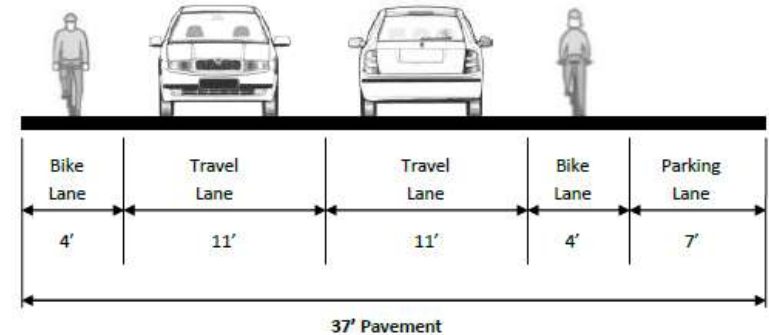
# Complete Streets

- Complete Streets enhance opportunities for all transportation modes and users
- Treatments Consist of
  - Pavement markings
  - Plantings
  - Improved Pedestrian Crossings
  - Enhanced Bus Stops
- Narrow lanes encourage lower travel speeds
- Complete Streets unique

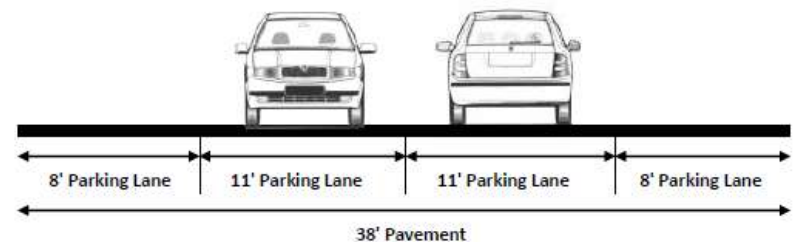
Sample Union Street Roadway Cross Section



Sample Baldwin Street Roadway Cross Section



Sample Main Street Roadway Cross Section



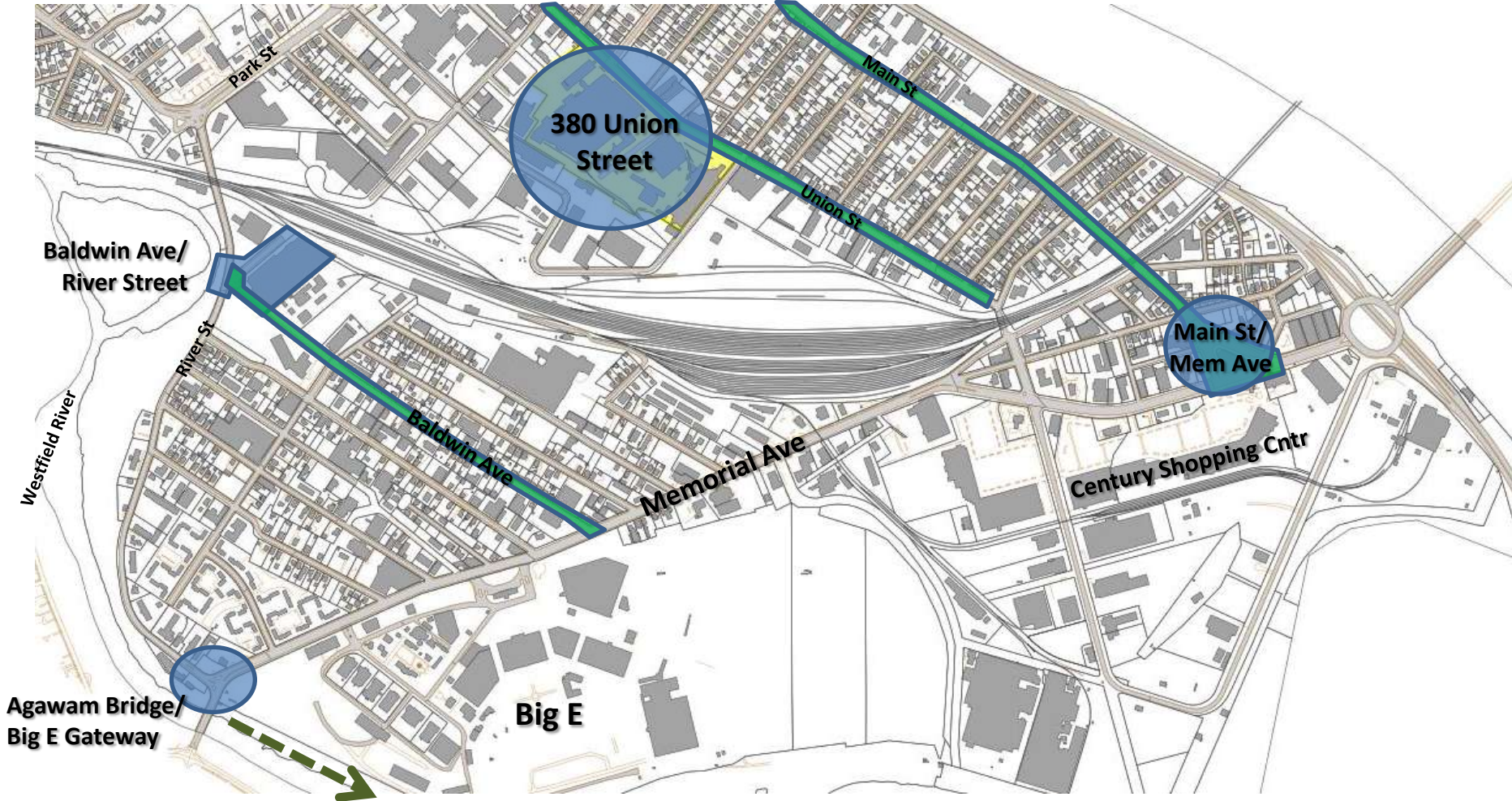
# Examples of Complete Streets

Concepts that could be applied to Merrick and Memorial neighborhoods



# Opportunity Focus Areas: Baseline Conditions

# Merrick/Memorial TCSP Opportunity Focus Areas



Major Neighborhood Core Arterial Streets

Potential "Gateway" Opportunity Sites



# Merrick Neighborhood

# Merrick Neighborhood

2012 Tornado Recovery Plan  
recommended:

- Better zoning
- Complete streets
- Public recreation

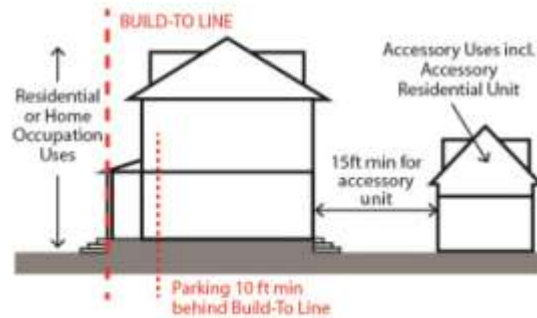


# Merrick Neighborhood

## Example of improved Merrick zoning

### 7.03.01 Traditional Residential Frontage

#### A. USE

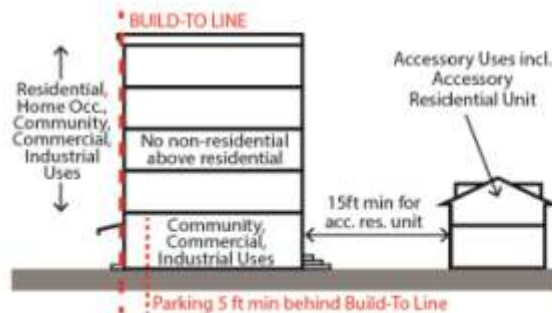


#### B. SITE



### 7.03.3 Mixed Use Redevelopment Frontage

#### A. USE



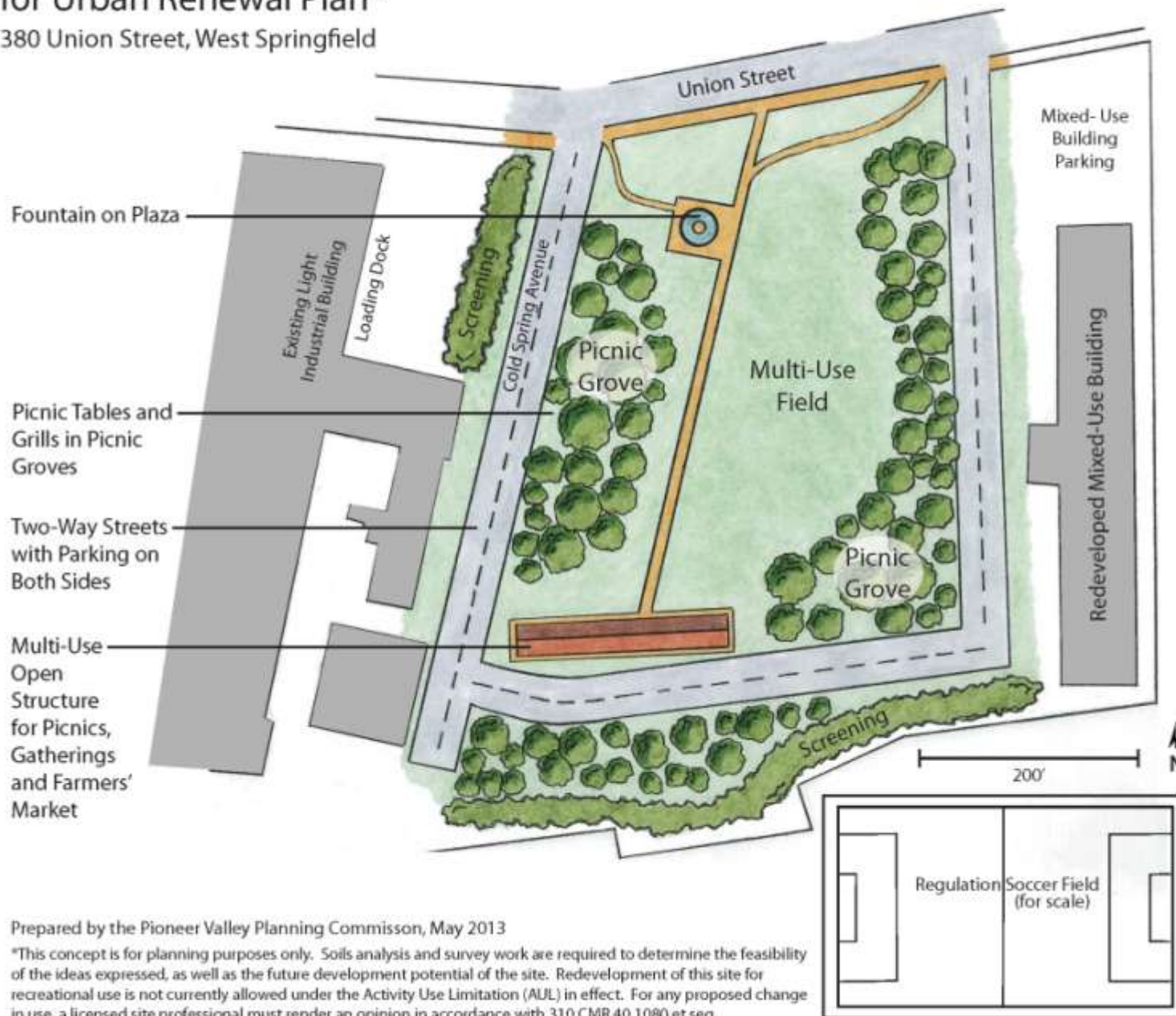
#### B. SITE



# Merrick Neighborhood Park Concept

for Urban Renewal Plan\*

380 Union Street, West Springfield



Prepared by the Pioneer Valley Planning Commission, May 2013

\*This concept is for planning purposes only. Soils analysis and survey work are required to determine the feasibility of the ideas expressed, as well as the future development potential of the site. Redevelopment of this site for recreational use is not currently allowed under the Activity Use Limitation (AUL) in effect. For any proposed change in use, a licensed site professional must render an opinion in accordance with 310 CMR 40.1080 et seq.

# Opportunity Focus Area Existing Conditions: Main at Memorial

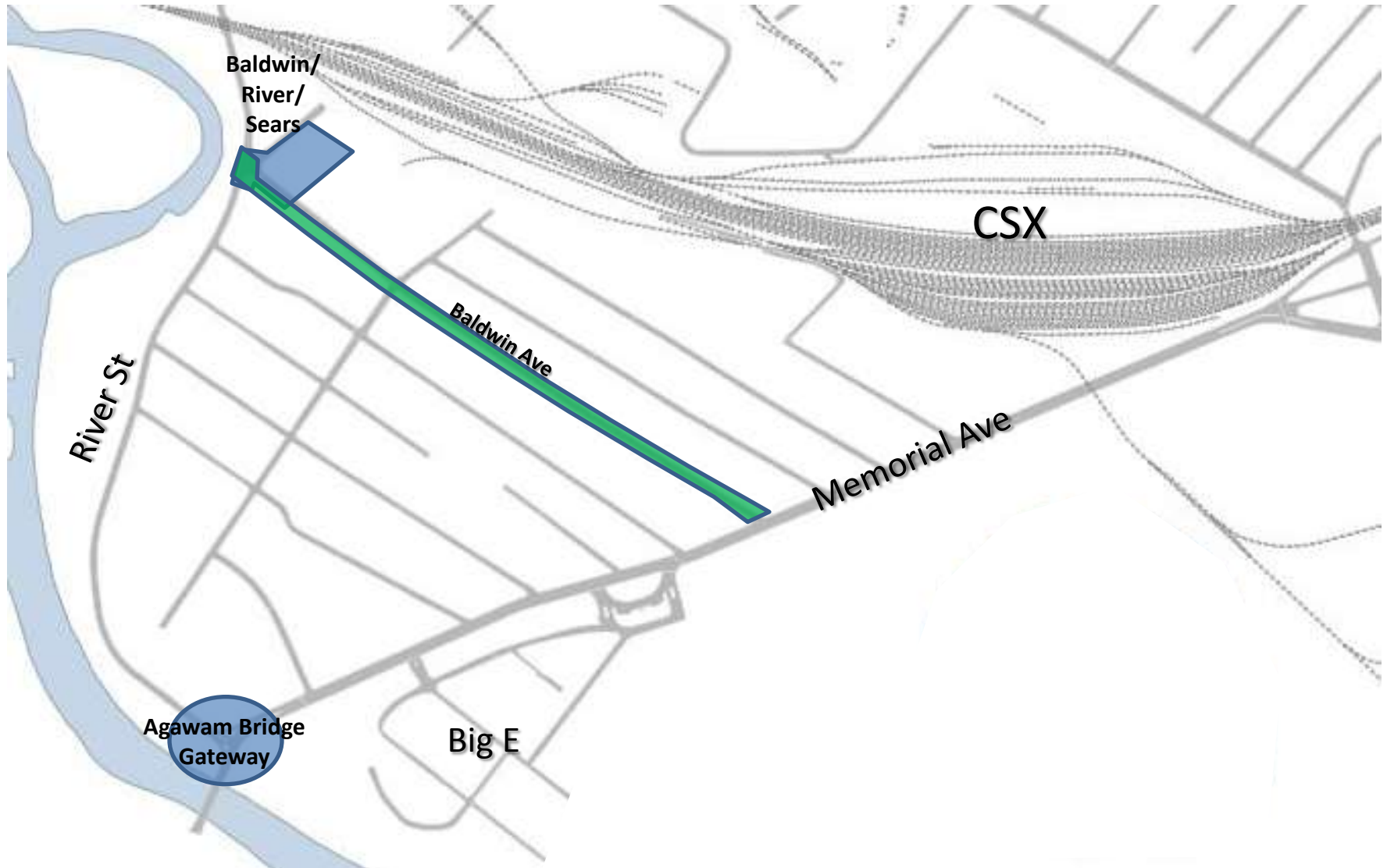


# Existing Conditions: Main at Memorial

- Incomplete sidewalks: Bresnahan from New Bridge to Memorial.
- Missing crosswalks at Memorial, New Bridge, Mulberry.
- Inadequate curbs/landscaping to define parking and traffic flow.
- Safety conflicts on Main Street.
- Insufficient parking for existing businesses (218 Memorial).
- Brownfield at 974 Main St. (Standard Plating Co).
- Prominent locations (CSX bridge) lack identifying icons and graphics for way-finding.
- Lack of bus shelters, bike lanes for non-auto travel.

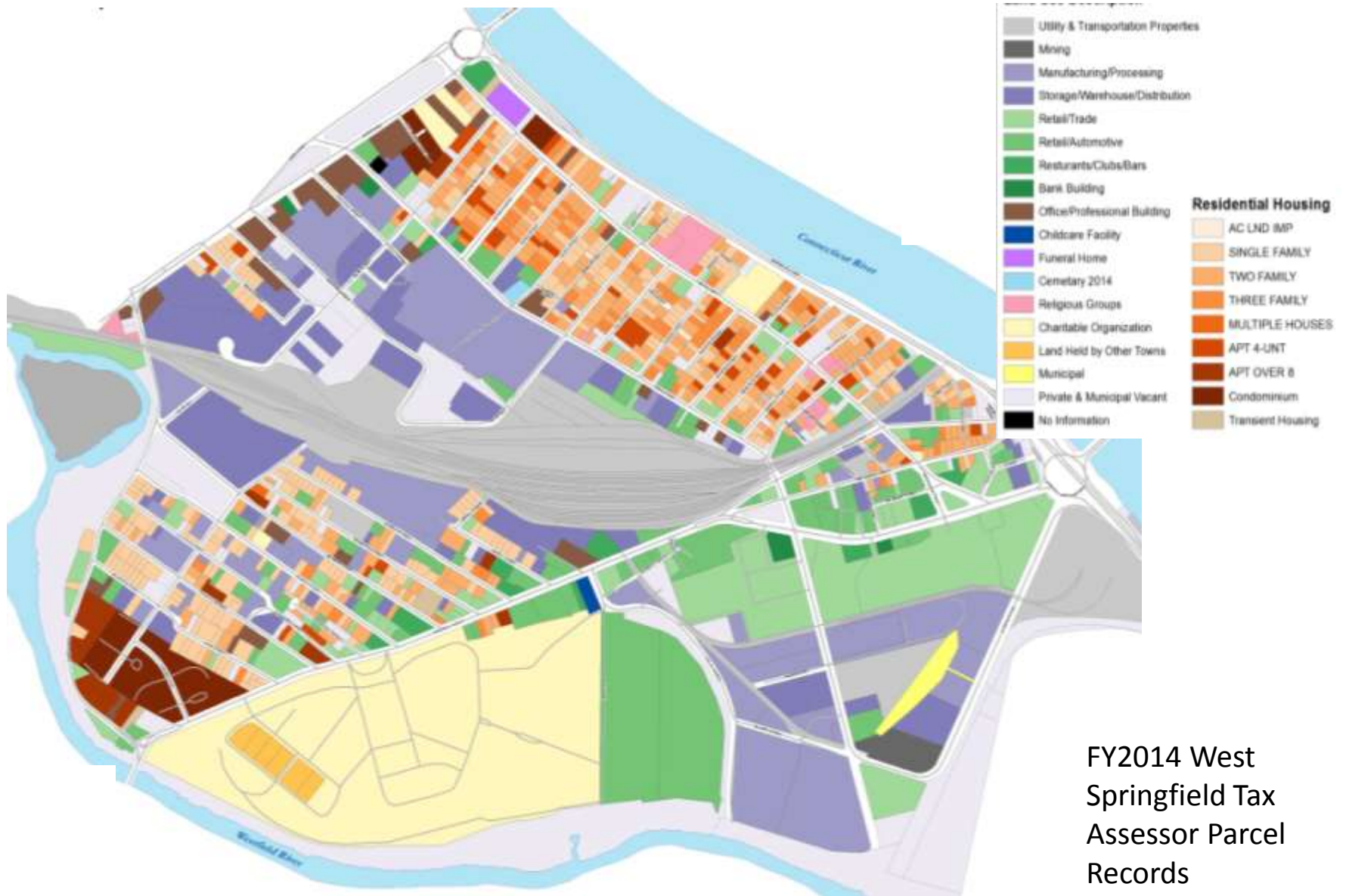
# Memorial Neighborhood

# Memorial Neighborhood: Opportunity Focus Areas





# Memorial Neighborhood: Existing Land Uses



FY2014 West  
Springfield Tax  
Assessor Parcel  
Records

# Opportunity Focus Area Existing Conditions: Agawam Bridge Gateway



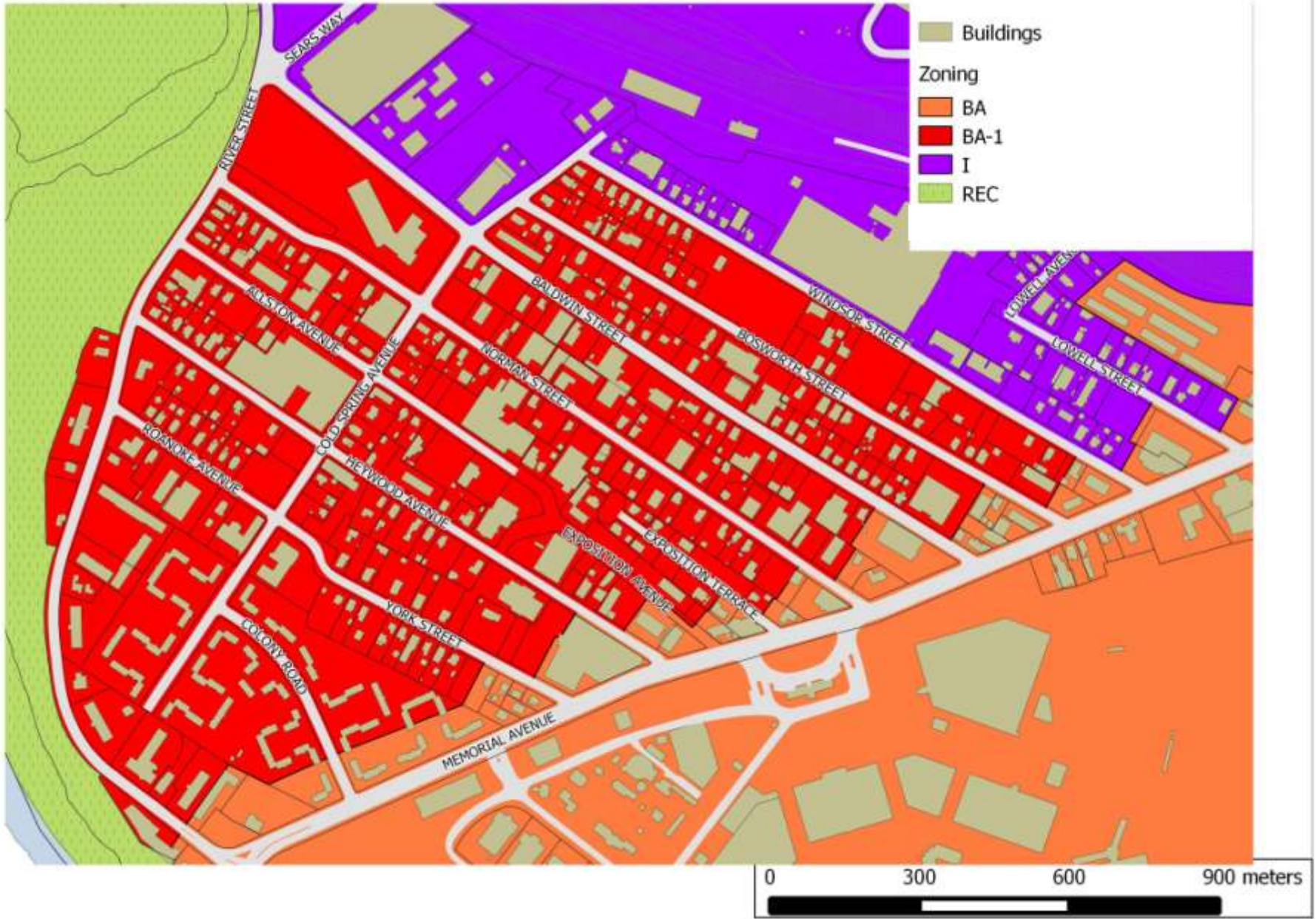
# Existing Conditions: River at Memorial

- Future bridge reconstruction will affect this area.
- Large contiguous concentration of well-kept multi-family homes and apartments.
- Traffic congestion on Memorial queuing for Big E Gate 1.
- Vacant lots at 1718 and 1672 Memorial Ave.
- Medallion Motel fills important local housing need.
- Numerous uncontrolled curb cuts on both sides of street.
- Dead end Cold Spring Ave a former connection to River St?

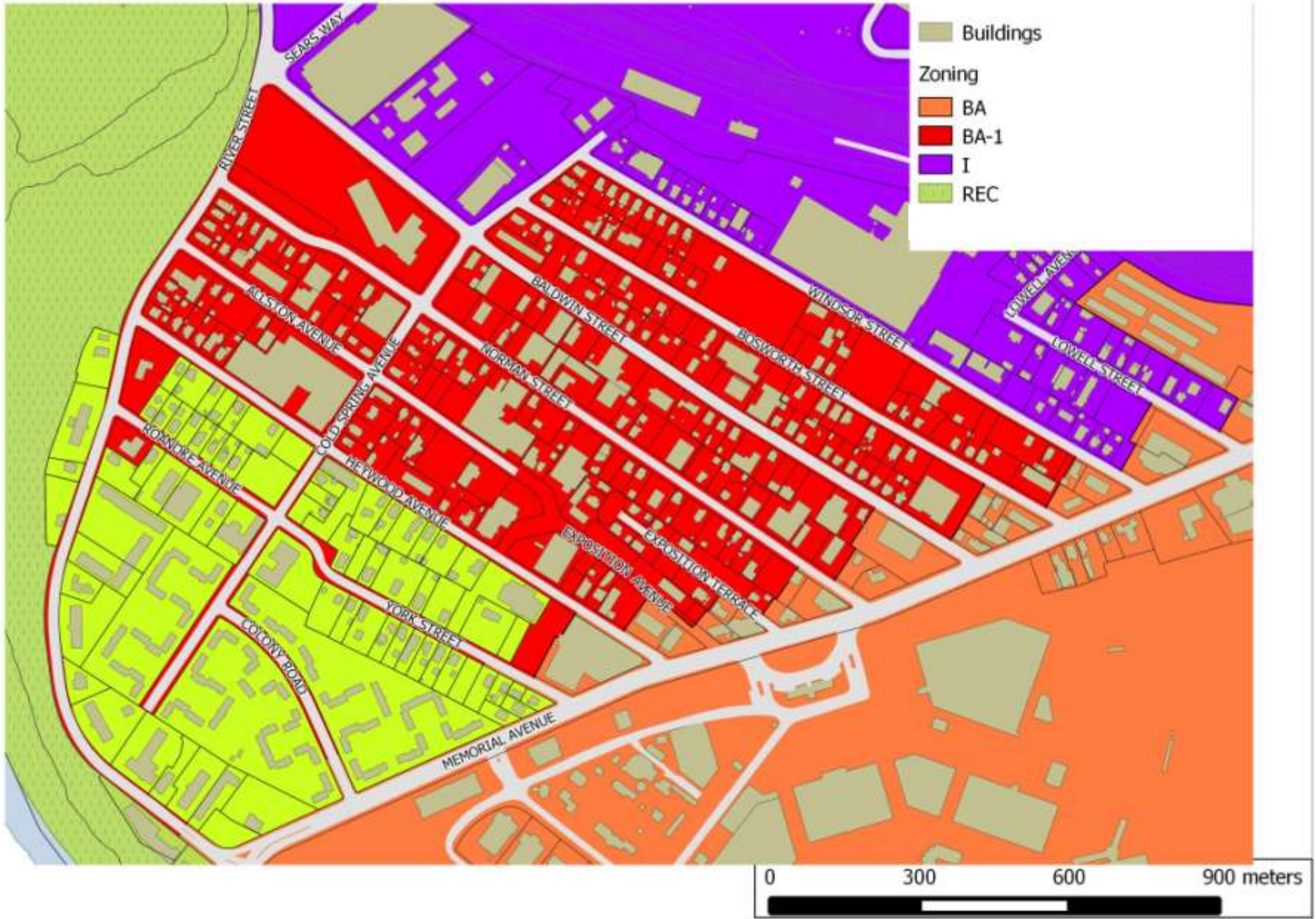
# Existing Conditions: River at Memorial



# Existing Zoning



# Existing Concentration of Homes



# Opportunity Focus Area Existing Conditions: Baldwin at River



# Existing Conditions: Baldwin at River

- Poor intersection geometry at Baldwin/River/Sears.
- 26 Sears Way vacant/underused due to insufficient parking.
- Parking shortage for ballfield games.
- Baldwin is a cut-through.
- Memorial Elem. School is community anchor.
- Queuing area(s) for parent/student drop-off/pickups.



# NEXT STEPS

- Memorial School Study - April
- Greenhouse Gas Emissions Study – April
- May 14<sup>th</sup> Public Meeting
- 30-Day Public Participation Process – Draft Report
- Final Report addressing comments
- Implementation

# DISCUSSION