

2005 – 2009 Regional Traffic Counts

Prepared by:



Pioneer Valley
Planning
Commission

Research Report

This report is prepared in cooperation with the Massachusetts Department of Transportation and the U.S. Department of Transportation – Federal Highway Administration. The views and opinions of the authors (or agency) expressed herein do not necessarily state or reflect those of the U.S. Department of Transportation.

Regional Traffic Counts 2005 - 2009

Research Report

**Prepared by:
Pioneer Valley Planning Commission
60 Congress Street
Springfield, MA 01104**

This report is Prepared in cooperation with the Massachusetts Department of Transportation and the U.S. Department of Transportation - Federal Highway Administration. The views and opinions of the authors (or agency) expressed herein do not necessarily state or reflect those of the U.S. Department of Transportation.

TABLE OF CONTENTS

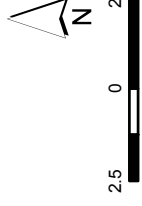
INTRODUCTION	1
DATA FORMAT	1
SEASONAL ADJUSTMENT FACTORS	2
REGIONAL GROWTH RATES	2
NON-MOTORIZED COUNTS	7
AM & PM PEAK HOUR VOLUMES	8
AUTOMATIC TRAFFIC RECORDER DATA SHEET	11
TRAFFIC COUNT SERVICES	12

COMMUNITY TRAFFIC COUNT DATA

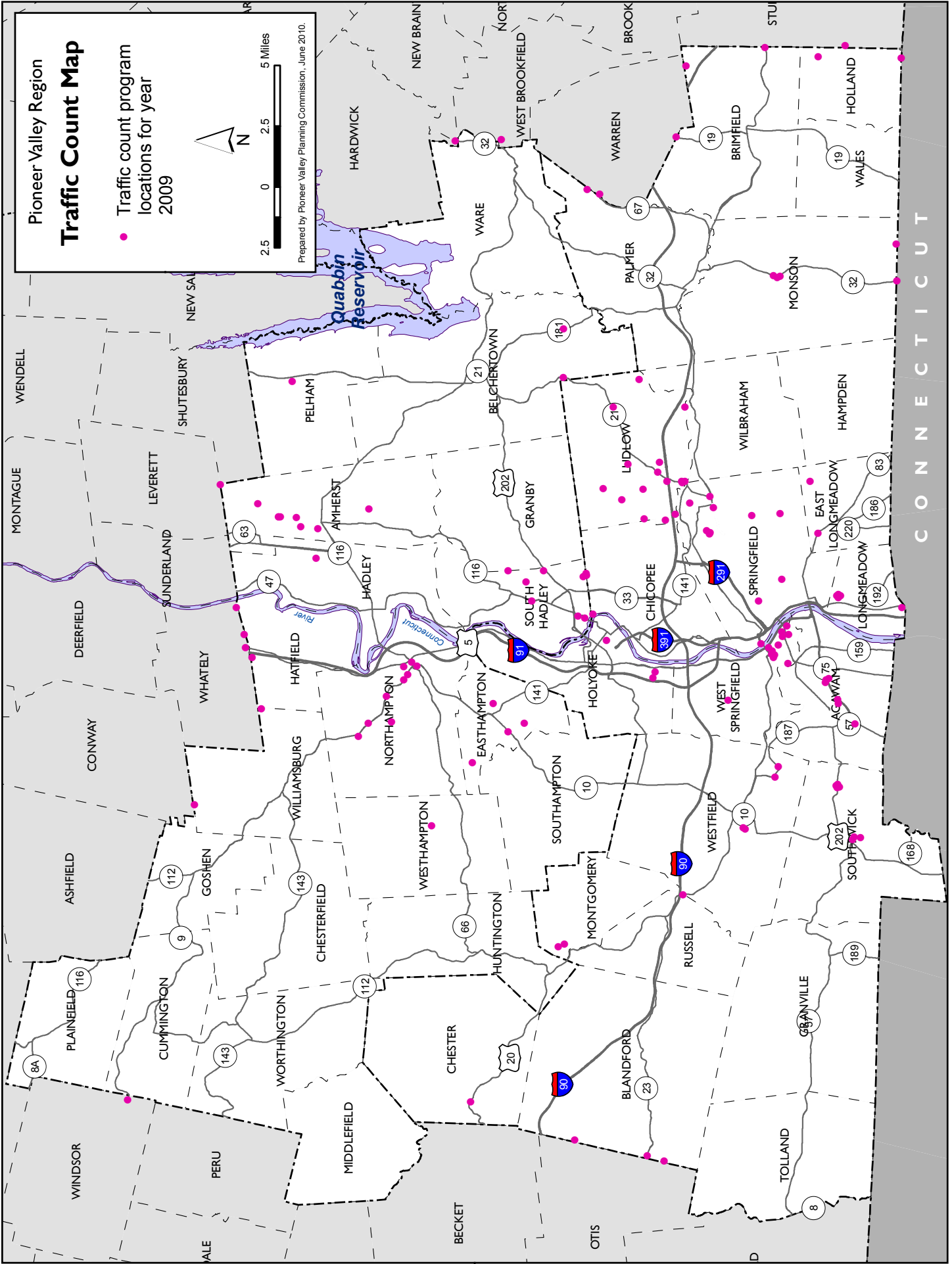
<u>Community</u>	<u>Page</u>	<u>Community</u>	<u>Page</u>
Agawam	13	Ludlow	20
Amherst	14	Middlefield	21
Belchertown	14	Monson	21
Blandford	14	Montgomery	21
Brimfield	15	Northampton	22
Chester	15	Palmer	23
Chesterfield	15	Pelham	23
Chicopee	15	Plainfield	23
Cummington	16	Russell	24
East Longmeadow	16	South Hadley	24
Easthampton	17	Southwick	25
Goshen	17	Springfield	26
Granby	18	Tolland	26
Granville	18	Wales	27
Hadley	18	Ware	27
Hampden	19	West Springfield	28
Hatfield	19	Westfield	29
Holland	19	Westhampton	30
Holyoke	19	Wilbraham	30
Huntington	20	Williamsburg	30
Longmeadow	20	Worthington	30

Pioneer Valley Region Traffic Count Map

Traffic count program locations for year 2009



Prepared by Pioneer Valley Planning Commission, June 2010.



CONNECTICUT

All regional roads not included to promote clarity.

INTRODUCTION

Traffic counts are conducted to collect information about the movement of people and vehicles across specific points along a given roadway. This information is often used as the basis for transportation planning studies, but has a wide variety of applications and uses. Traffic volumes can be used to evaluate the current performance characteristics of existing roadway segments, identify the need for additional transportation facilities to reduce existing congestion and gridlock, and as a gage of the effectiveness of new businesses that rely on pass-by traffic (i.e. convenience stores, gas stations, and retail establishments). By far, the most important use of daily traffic count information is to identify trends in traffic volumes to assist in the development of seasonal adjustment factors and future growth rates. This information is used as the building blocks for future traffic projections used in transportation planning studies.

The Pioneer Valley Planning Commission (PVPC) collects daily traffic count information at sample locations across the 43 cities and towns in Hampden and Hampshire Counties under contract with the Massachusetts Department of Transportation (MassDOT). MassDOT requests specific traffic count locations each year as part of PVPC's 3C contract. Additional counts are conducted for member communities on an as requested basis (up to 2 free counts per year) and for private businesses for a nominal fee. The PVPC also selects its own traffic count locations to supplement data collection activities required as part of ongoing corridor studies, the regional congestion management system, the regional pavement management system, and the regional transportation model. In addition, the PVPC houses shared traffic counts performed by a member community.

DATA FORMAT

The following example shows the format in which the traffic count data is presented:

Traffic Counts for Ludlow

Station	Facility	Location	Route	2007
9378	Center St.	N/O Sewall St.	21	21,285
9377	Center St.	S/O Sewall St.	21	14,431
9376	Sewall St.	E/O Center St.	**	6,602

A *station* number is assigned to each count location by the MassDOT and PVPC. Station numbers beginning with a 1, 2, or 3 are counts requested by and performed for MassDOT. Station numbers beginning with a 0 followed by a three digit MASSGIS town identification number are locations counted by a member community, and station numbers beginning with a 7, 8, or 9 are locations selected by the PVPC.

Facility identifies the street or roadway name on which the counter was placed, and *location* identifies the traffic counter's location in relation to the nearest cross street or political boundary. The *route* is the state or federally designated highway number of the facility, if applicable. Finally, the actual, unadjusted traffic count is listed by the *year(s)* in which it was performed. However, traffic counts performed by MassDOT are presented in this document as adjusted volumes. On two-way roadways, the traffic count volume consists of the total of both directions of travel.

In addition the following abbreviations are used:

N/O: North of	T.L.: Town Line
S/O: South of	C.L.: City Line
E/O: East of	S.L.: State Line
W/O: West of	btw: between

SEASONAL ADJUSTMENT FACTORS

Traffic counts conducted as part of this book were performed for a minimum of 48 hours on a weekday during the months of March - December. The traffic volumes presented represent seasonal average daily traffic (SADT) and have been left in their raw, unadjusted form. MassDOT develops statewide adjustment factors based on the functional classification of the roadway which are shown in Table 1. Due to the seasonal nature of PVPC's traffic counting program, the counts represented in this document can be expected to have some margin of error. The user is strongly encouraged to collect new traffic count data whenever possible for use in planning applications.

Table 1
**Weekday Seasonal Adjustment Factors
 for Urban Arterial, Collector, and Rural Arterial Roadways**

<u>Jan</u>	<u>Feb</u>	<u>Mar</u>	<u>Apr</u>	<u>May</u>	<u>Jun</u>	<u>Jul</u>	<u>Aug</u>	<u>Sep</u>	<u>Oct</u>	<u>Nov</u>	<u>Dec</u>
0.99	0.99	0.95	0.92	0.90	0.90	0.91	0.90	0.94	0.93	0.98	0.99

source: Massachusetts Department of Transportation 2009

REGIONAL GROWTH RATES

MassDOT currently collects data at fourteen permanent traffic count stations in the Pioneer Valley Region. These permanent count locations are shown in Table 2.

Table 2
MassDOT Permanent Count Stations in the Pioneer Valley

<u>Community</u>	<u>Roadway</u>	<u>Location</u>	<u>Years Available</u>
Longmeadow	I-91	S/O Springfield City Line	1994-1997,1999,2006
Chicopee	I-391	S/O I-90 at Route 116	1995-2003,2006-2008
Chicopee	I-391	N/O I-90	1994, 1996-2003,2005-2007
Chicopee	I-391	@ Connecticut River Bridge	2005-2008
Northampton	Route 5/10	S/O Hatfield Town Line	1994-2008
Northampton	I-91	N/O King Street Interchange	1995-1997,1999,2000, 2002-2004
Springfield	I-291	S/O Roosevelt Avenue	1998, 2003-2005,2007,2008
Springfield	I-291	@Chicopee C.L.	2007,2008
Brimfield	Route 20	.8 km E/O Holland Road	1997-2004,2006-2008
West Springfield	Route 5	at the Holyoke City Line	1996, 1998-2008
West Springfield	I-91	N/O Route 5	1994-2002,2005-2008
Huntington	Route 112	S/O Route 66/112	1995-2003,2005-2008
Goshen	Route 112	0.6 km S/O Ashfield Town Line.	1996-2002
Russell	Route 20	1.0 km W/O Route 23	1998-2005,2007,2008

Source: Massachusetts Department of Transportation

By examining the change in traffic volumes at the permanent count stations, information can be developed on the amount of growth occurring at specific locations throughout the region. Locations have been grouped by the functional classification of the roadway and plotted on graphs in Figures 1 through 3. The functional classification of the roadway is an indication of the type and amount of traffic a roadway is expected to serve.

Table 3 provides information on the percent change in traffic volumes at the above mentioned locations.

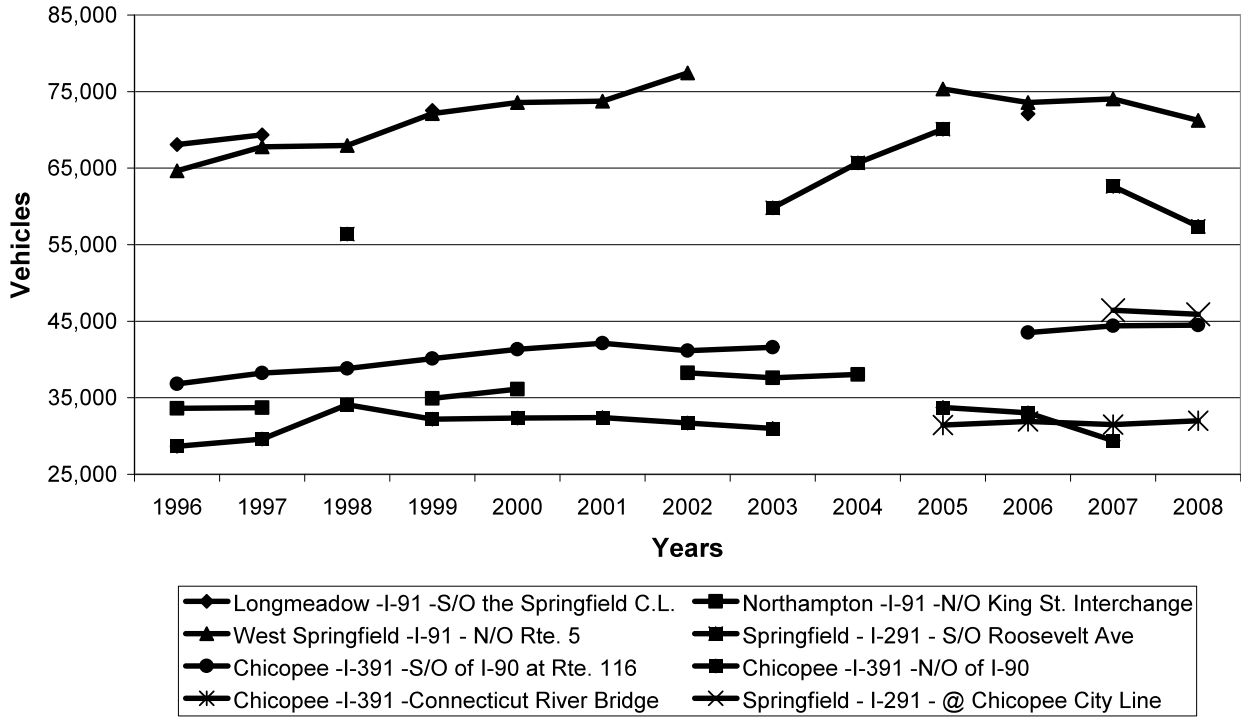
Table 3
Percent Change in Interstate Traffic Volumes

<u>Community</u>	<u>Roadway</u>	<u>Location</u>	<u>Years Available</u>	<u>% Change</u>
Longmeadow	I-91	S/O Springfield City Line	1994-1997,1999,2006	8.41
Northampton	I-91	N/O King Street Interchange	1995-1997,1999,2000, 2002-2004	18.16
West Springfield	I-91	N/O Route 5	1994-2002,2005-2008	25.00
Springfield	I-291	S/O Roosevelt Avenue	1998, 2003-2005, 2007, 2008	1.74
Springfield	I-291	@Chicopee C.L.	2007,2008	-1.14
Chicopee	I-391	S/O I-90 at Route 116	1995-2003,2006-2008	23.26
Chicopee	I-391	@ Connecticut River Bridge	2005-2008	1.81
Chicopee	I-391	N/O I-90	1994, 1996-2003.2005-2007	-18.33

Figure 1 shows the change in traffic volumes at eight MassDOT interstate count stations in the PVPC region. Traffic increased at the above mentioned locations except I-291 at Chicopee City Line in Springfield and I-391 N/O I-90 in Chicopee where traffic volume decreased. The largest increase in traffic volume occurred in Northampton, West Springfield, and Chicopee whereas the largest decrease in traffic volume took place on I-391 N/O I-90 in Chicopee.

Figure 1

Average Annual Traffic at MHD Permanent Count Stations on Interstate Routes in the PVPC Region

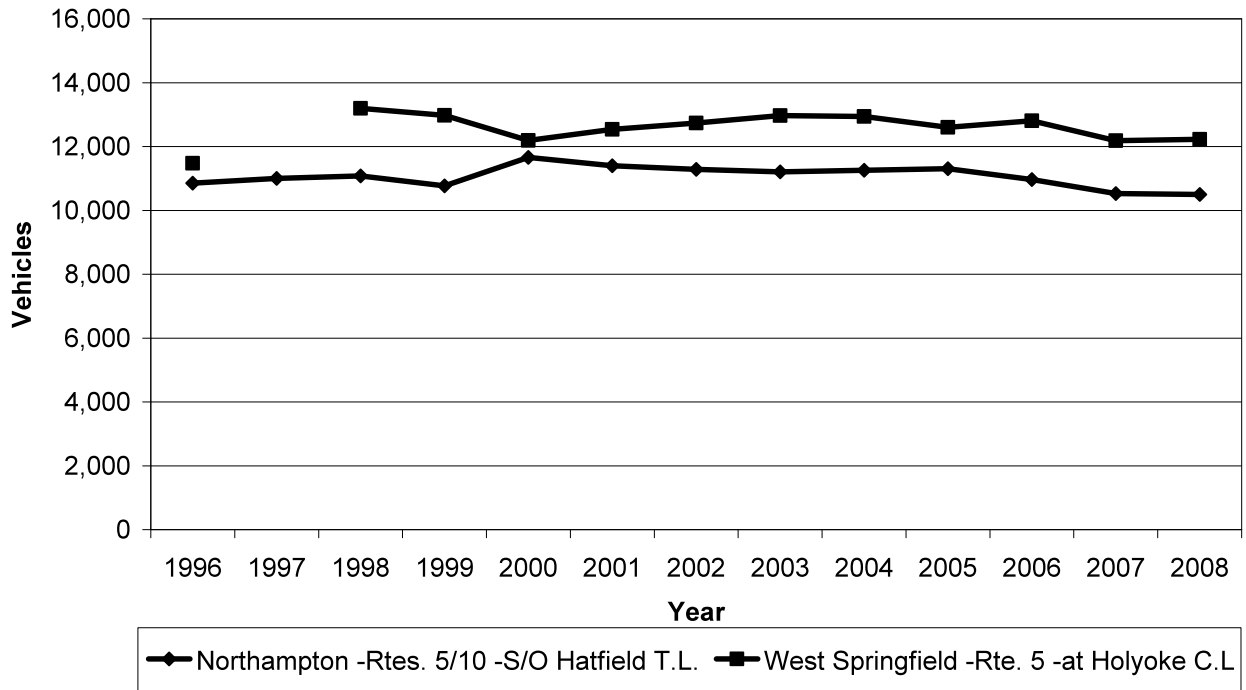


The two MassDOT count stations shown in Figure 2 experienced different trends. For the most part, traffic on Routes 5/10 south of the Hatfield Town Line in Northampton mirrors the growth pattern of the interstate roadways in the PVPC region. This location experienced steady volumes from 2000 to 2005, however, traffic volume decreased by 7% from 2005 to 2008.

Traffic on Route 5 at the Holyoke City Line in West Springfield increased from 2000 to 2004 by 6% but there was a decrease of 5.5% from 2004 to 2008. This data should be used with extreme caution due to the very small sample size and variation in trends at these two locations.

Figure 2

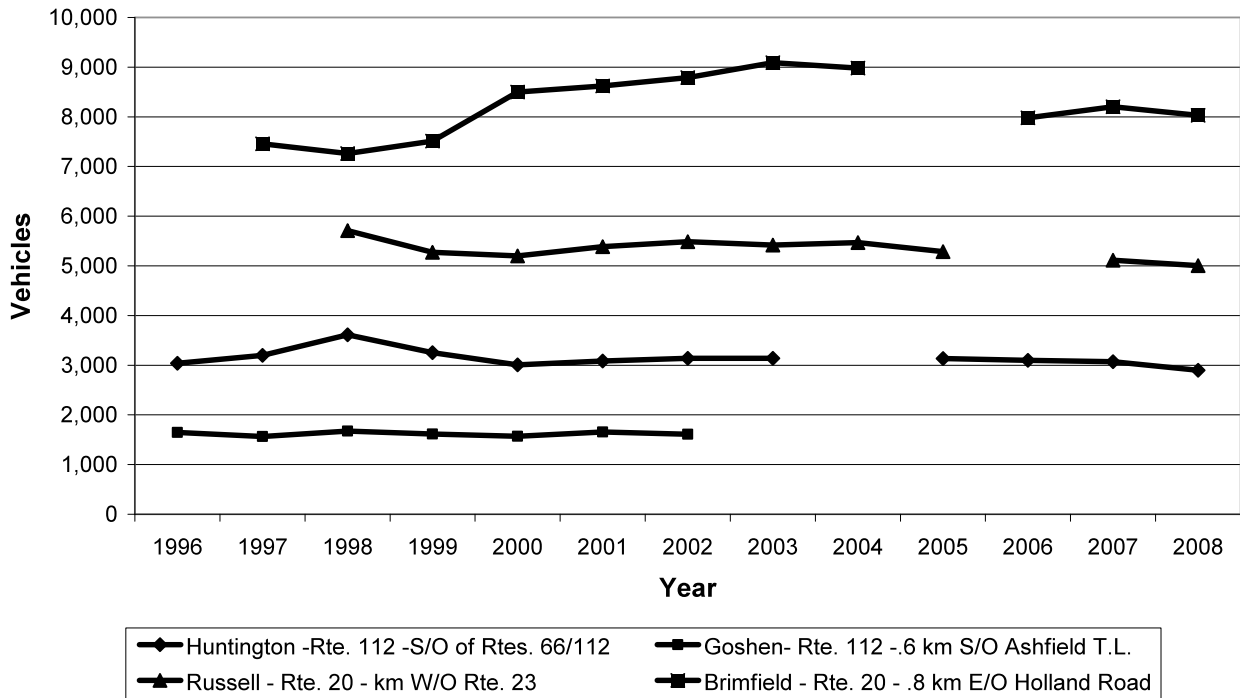
Average Annual Daily Traffic at MHD Permanent Count Stations on Urban Arterial Roadways in the PVPC Region



The annual change in traffic volumes at MassDOT permanent stations on rural roadways in the PVPC region is shown on Figure 3. Traffic on Route 112 South of Route 66/112 in Huntington has held steady from 2000 to 2006 although there was a decrease of 6.5% from 2006 to 2008. Traffic on Route 112 0.6 km South of Ashfield Town Line in Goshen has also been holding steady and very little change has occurred between 1996 and 2002. For the most part, traffic on Route 20 in Russell has also been holding steady. At this location, traffic decreased by 12% from 1998 to 2008. Traffic volume on Route 20 in Brimfield increased by almost 8% from 1997 to 2008. Again this data should be used with extreme caution due to the small sample size of rural roadways for the PVPC region. The user is encouraged to collect additional traffic count information to verify trends whenever possible.

Figure 3

Average Annual Daily Traffic at MHD Permanent Count Stations on Rural Roadways in the PVPC Region



Pioneer Valley Planning Commission currently collects data at four permanent traffic count stations in the Pioneer Valley Region. These locations consist of an eastern rural community (Belchertown), a western rural community (Russell), a suburban community (East Longmeadow), and an urban community (Springfield). These permanent count locations are shown in Table 4.

Table 4
PVPC Permanent Count Stations in the Pioneer Valley

<u>Community</u>	<u>Route #</u>	<u>Location</u>	<u>Years Available</u>
East Longmeadow	83	North of Dearborn Street	1998 - 2009
Springfield	21	North of Route 20	1998 – 2006, 2009
Belchertown	181	South of Michael Sears Road	1998 - 2009
Russell	20	at Westfield City Line	1998 - 2009

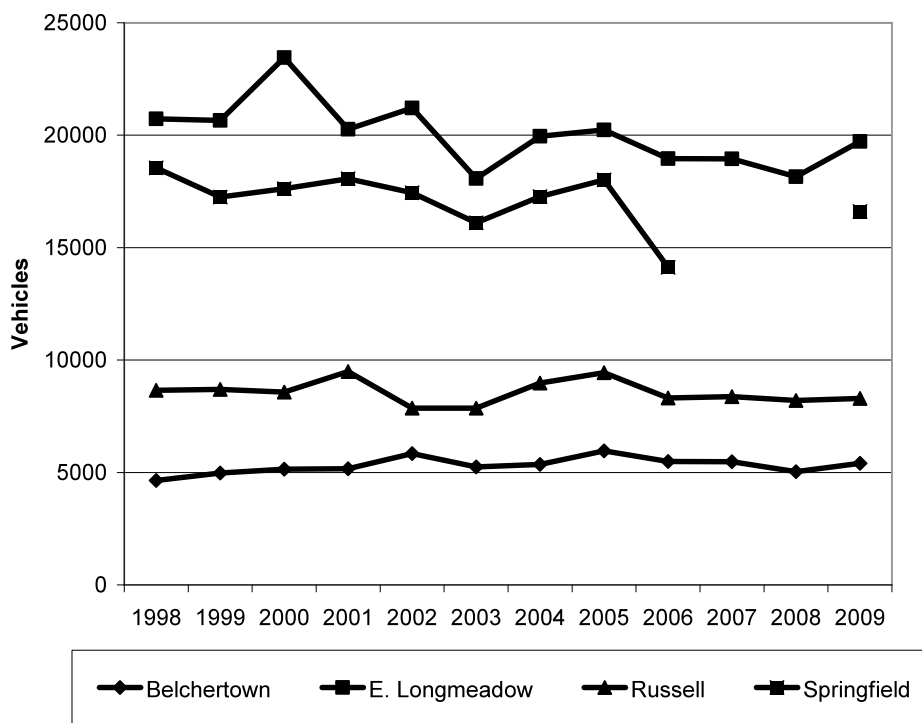
Source: PVPC

The annual change in traffic volumes for the above mentioned locations is shown on Figure 4. Traffic in the Town of Belchertown grew by an average of 16.5% from 1998 to 2009. This location showed a decrease in average traffic volume of 9% from 2005 to 2009. Traffic in Russell decreased by 4% from 1998 to 2009. For the most part, traffic volume held steady in the Town of East Longmeadow from 2003 to 2009, however, there was a decrease in volume of approximately 5% from 1998 to 2009. Springfield’s permanent station was not counted in 2007 and 2008 due to a roadway reconstruction project on Parker Street north of Boston Road. This location showed a decrease in traffic volume of 22% from 2005 to 2006. This sharp decrease in traffic volume can be attributed to roadway reconstruction preparatory work. However, the data shows that traffic increased after the completion of the roadway project. Again, this data should be used with extreme

caution due to the small sample size. The user is encouraged to collect additional traffic count information to verify trends whenever possible.

Figure 4

Average Annual Daily Traffic at PVPC Permanent Count Stations in the Pioneer Valley



NON-MOTORIZED COUNTS

The Pioneer Valley Planning Commission began collecting volume data for bikepaths in the region in 1996. A passive infra-red signal detector with a data logger is used to tabulate and store volume counts (events) on bikeways. The device records a count each time an infra-red beam is interrupted by a passing cyclist or pedestrian. The weatherproof data logger (Onset Computer Corp) has the capacity to store 16,000 events. The counting device operates within a temperature range of 14 to 158 degrees F and will lose all data if temperatures exceed these limits. In each instance where the counting device records erroneously high or low volumes, the errors can be identified when the data is downloaded and normalized. Bikepath volume data is useful in predicting peak hours of use, seasonal fluctuations, and for engineering studies such as a signal warrant analysis. This data is used to improve existing facilities and assist in the design of future bikepath projects in the region. In 2010, counts are planned for the Norwottuck Rail Trail in Hadley, the Easthampton Manhan Rail Trail, and the Springfield Connecticut River Walk and Bikeway. Additional bike path counts may be requested by local communities through the Pioneer Valley Planning Commission's Local Technical Assistance (LTA) Program.

AM & PM PEAK HOUR VOLUMES

Table 5 shows peak hour volumes by direction for each count location during the 2009 count season. The actual peak hour time is not shown, however it can be obtained by contacting the PVPC.

Table 5
**AM & PM Peak Hour Volumes
 2009 Count Stations**

COMMUNITY	FACILITY	LOCATION	STAT.	AM	AM	PM	PM
			#	NB/WB	SB/EB	NB/WB	SB/EB
AGAWAM	Route 57 off Ramp	To Mill St.	9512	166	-	314	-
AGAWAM	Route 57 off Ramp	To Garden St.	9513	206	-	134	-
AGAWAM	Garden St.	B/W Poplar St. and Rt. 57 off Ramp	9509	91	163	174	102
AGAWAM	Mill St.	E/O Cooper St.	9511	374	390	572	426
AGAWAM	South Westfield St.	B/W Rt. 57 and South Westfield St.	9508	460	361	510	464
AGAWAM	Mill St.	S/O Tennis Rd.	9510	233	175	272	256
AMHERST	East Leverett Rd.	@ Leverett T.L.	2100	45	138	130	60
AMHERST	Strong St.	E/O East Pleasant St.	2109	236	166	172	236
AMHERST	East Pleasant St.	S/O Eastman Lane	2110	294	394	414	368
AMHERST	Henry St.	S/O Pine St.	2111	135	133	164	152
AMHERST	Amity St.	W/O Lincoln Ave.	2112	319	304	469	362
AMHERST	Shay's St.	W/O Middle St.	2113	154	50	77	140
AMHERST	Massachusetts Ave.	W/O North Pleasant St.	2114	363	314	371	456
AMHERST	East Pleasant St.	N/O Eastman Lane	2122	162	451	388	257
BLANDFORD	Otis Stage Rd.	@ Otis T.L.	8961	47	54	58	70
BLANDFORD	Otis Tolland Rd.	@ Otis T.L.	9098	47	42	40	50
BLANDFORD	North Blandford Rd.	@ Otis T.L.	9097	9	12	12	14
BRIMFIELD	Sturbridge Rd.	@ Sturbridge T.L.	8005	232	380	478	281
BRIMFIELD	Brookfield Rd	@ Warren T.L.	8007	40	43	45	84
BRIMFIELD	Warren Rd.	@ Warren T.L.	8006	34	58	62	43
CHESTER	West Main St. (rte 20)	W/O Middlefield Rd.	1132	64	70	102	94
CHICOPEE	Syrek St.	@ South Hadley T.L.	2140	190	226	254	306
CUMMINGTON	Berkshire Trail	@ Windsor T.L.	9521	105	103	115	136
E. LONGMEADOW	Porter Rd.	W/O Allen St.	2178	367	185	286	359
EASTHAMPTON	South St.	N/O Main St. (rte 10)	2115	46	58	88	80
EASTHAMPTON	Park St.	S/O South St.	2116	184	307	380	277
EASTHAMPTON	Loudville Rd.	E/O Torrey St.	2118	168	92	133	196
EASTHAMPTON	Everett St.	E/O Adams St.	2121	74	52	88	83
HADLEY	North Maple St.	S/O Mt. Warner Rd.	2102	390	338	433	514
HATFIELD	West St.	@ Whatley T.L.	7066	143	137	226	212
HATFIELD	Straits Rd.	@ Whatley T.L.	8016	17	20	24	31
HATFIELD	Main St.	@ Whatley T.L.	9171	49	39	64	68
HATFIELD	Pantry Rd.	@ Whatley T.L.	9522	26	50	52	35
HOLLAND	Leno Rd.	@ Sturbridge T.L.	9523	14	34	42	18
HOLLAND	Sturbridge Rd	@ Sturbridge T.L.	7302	50	81	96	67
HOLLAND	Mashapang Rd.	@ CT S.L.	7078	34	80	86	48
HOLYOKE	Lower Westfield Rd.	W/O Holyoke St.	9518	584	861	1030	1059
HOLYOKE	Cabot St.	E/O High St.	2126	240	205	320	230
HOLYOKE	Lower Westfield Rd.	W/O Ingleside Rd.	2124	117	136	159	152
LONGMEADOW	Longmeadow St.	@ CT S.L.	7054	304	630	753	399
LONGMEADOW	Converse St.	E/O Laurel St.	9515	692	463	592	691
LONGMEADOW	Laurel St.	N/O Converse St.	9516	926	178	689	248
LONGMEADOW	Laurel St.	S/O Converse St.	9517	416	145	349	172
LONGMEADOW	Converse St.	W/O Laurel St	9514	261	582	272	660

Table 5 (Continued)
AM & PM Peak Hour Volumes
2009 Count Stations

COMMUNITY	FACILITY	LOCATION	STAT.	AM	AM	PM	PM
			#	NB/WB	SB/EB	NB/WB	SB/EB
LUDLOW	West St.	S/O Nash Hill Rd	9531	300	638	542	388
LUDLOW	Center St.	S/O Windsor St.	9539	467	573	559	686
LUDLOW	Center St.	N/O Stivens Terr.	9538	420	806	605	600
LUDLOW	Center St.	@ Belchertown T.L.	9537	124	285	262	162
LUDLOW	Fuller St.	S/O Pinecone Ln.	9536	144	150	150	204
LUDLOW	Kendall St.	E/O Holy Cross Circle	9535	270	106	146	279
LUDLOW	Cady St.	@ Chicopee C.L.	9534	212	71	111	159
LUDLOW	Church St.	B/W Center St. and Munsing St.	9540	309	76	107	321
LUDLOW	Poole St.	E/O Alden St.	9546	72	46	56	130
LUDLOW	Windsor St.	E/O Center St.	9547	179	137	186	115
LUDLOW	Chapin St.	E/O Chapin Circle	9544	573	422	548	494
LUDLOW	Moore St.	S/O Center St.	9545	69	26	53	32
LUDLOW	Cherry St.	B/W Cady St. and Center St.	9543	193	176	338	282
LUDLOW	East St.	W/O Seawall	9542	342	382	424	552
LUDLOW	Miller St.	S/O Chapin St.	9541	298	258	350	386
LUDLOW	West St.	Shawnigan St.	9532	292	386	496	351
LUDLOW	Holyoke St.	@ Chicopee C.L.	9533	884	340	511	833
MONSON	Main St. (rte 32)	E/O High St.	3243	554	314	424	538
MONSON	High St.	W/O Main St. (rte 32)	3244	294	118	148	211
MONSON	Main St.	N/O Harrison Rd.	9498	362	231	328	418
MONSON	Moulton Hill Rd.	@ CT S.L.	8023	6	10	12	12
MONSON	Stafford Rd.	@ CT S.L.	6059	64	94	107	62
MONTGOMERY	Carrington Rd	N/O Thomas Rd.	9503	29	20	28	29
MONTGOMERY	Carrington Rd	S/O Thomas Rd.	9502	24	25	28	30
NORTHAMPTON	Florence St.	W/O North Main St. (rte 9)	2086	146	212	226	208
NORTHAMPTON	Florence Rd.	S/O Spring St.	2087	583	278	419	526
NORTHAMPTON	Bridge Rd.	E/O North Main St. (rte 9)	2093	338	479	446	402
NORTHAMPTON	Main St.	W/O Center St.	2096	455	599	415	543
NORTHAMPTON	State St.	N/O Bright St.	2219	314	375	400	340
NORTHAMPTON	Clark Ave.	E/O New South St.	2221	6	30	26	18
NORTHAMPTON	Elm St.	E/O Paradise Rd.	9504	437	715	599	625
NORTHAMPTON	Elm St.	W/O Washington Ave.	9507	459	691	616	636
NORTHAMPTON	Locust St.	W/O Hatfield St.	9505	543	847	785	647
PALMER	West Ware St.	@ Warren T.L.	9520	94	84	108	120
PALMER	Boston Rd.	@ Warren T. L.	7080	247	110	164	246
PELHAM	Amherst Rd.	W/O Daniel Shays Hwy. (rte 202)	2106	125	46	74	121
SOUTH HADLEY	Silver St.	@ Granby T.L.	2134	50	38	50	70
SOUTH HADLEY	East St.	N/O Granby Rd. (rte 202)	2135	60	74	88	79
SOUTH HADLEY	Gaylord St.	W/O Lamb St. (rte 116)	2136	54	68	60	62
SOUTH HADLEY	Bridge St.	B/W Main St. and Lamb St.	2223	174	364	366	208
SOUTH HADLEY	Industrial Dr.	E/O Old Lyman Rd.	9526	38	55	45	34
SOUTH HADLEY	New Ludlow Rd.	@ Chicopee C.L.	9524	340	240	335	436
SOUTH HADLEY	College St.	S/O Leahey St.	9527	472	466	557	627
SOUTH HADLEY	Morgan St.	B/W Mosier St. and Charon St.	9519	194	114	175	176
SOUTH HADLEY	Old Lyman Rd.	N/O New Ludlow Rd.	9525	124	100	121	148
SOUTHWICK	Foster Rd.	S/O Feeding Hills Rd. (rte 57)	2168	140	117	168	110
SOUTHWICK	Depot St.	E/O College Hwy. (rte 10/202)	2242	298	211	403	491
SOUTHWICK	North Longyard Rd.	N/O Feeding Hills Rd.	9530	146	248	293	200
SOUTHWICK	Feeding Hills Rd.	W/O Foster Rd.	9528	332	582	588	480
SOUTHWICK	Feeding Hills Rd.	E/O Foster Rd.	9529	307	626	632	433
SOUTHWICK	Depot St.	B/W Sheep Pasture Rd. and Powder Mill Rd.	9337	110	175	196	196
SOUTHWICK	Sheep Pasture Rd.	S/O Depot St.	9297	210	184	253	259

Table 5 (Continued)
AM & PM Peak Hour Volumes
2009 Count Stations

COMMUNITY	FACILITY	LOCATION	STAT.	AM	AM	PM	PM
			#	NB/WB	SB/EB	NB/WB	SB/EB
SPRINGFIELD	Armory St.	S/O Worthington St.	2180	112	112	154	129
SPRINGFIELD	Boston Rd.	W/O Pasco Rd. (rte 20/20A)	2182	888	773	1061	958
SPRINGFIELD	Pinevale St.	N/O Goodwin St.	2184	26	36	32	42
SPRINGFIELD	Birchland Ave.	S/O Wilbraham Rd.	2188	12	34	22	34
SPRINGFIELD	Riverside Dr.	N/O Route 20	2181		86		164
SPRINGFIELD	South Branch Pkwy.	E/O Wildwood Ave.	2193	122	95	107	148
SPRINGFIELD	Hickory St.	E/O Walnut St.	2194	143	445	382	361
SPRINGFIELD	Berkshire St.	S/O Cottage St.	9500	733	760	826	907
SPRINGFIELD	Cottage St.	W/O Berkshire St.	9499	434	722	536	481
SPRINGFIELD	Berkshire St.	N/O Cottage St.	9501	262	606	540	481
WARE	East St.	@ Brookfield T. L.	9152	197	152	219	211
WARE	Gilbertville Rd.	@ New Braintree T. L.	9149	137	158	255	186
W. SPRINGFIELD	Pease Ave.	E/O Amostown Rd.	2204	234	462	566	294
W. SPRINGFIELD	Union St.	N/O Bliss St.	8808	379	398	464	454
W. SPRINGFIELD	Western Ave.	S/O Park Ave.	8810	109	66	164	68
W. SPRINGFIELD	Union St. Ext.	S/O Memorial Ave.	8968	247	237	290	267
W. SPRINGFIELD	Main St.	S/O Park Ave.	8969	251	286	324	330
W. SPRINGFIELD	Progress Ave.	S/O Park Ave.	8809	21	22	30	16
W. SPRINGFIELD	Sylvan St.	S/O Park Ave.	8811	18	38	20	33
W. SPRINGFIELD	Union St.	N/O Bridge St.	8970	354	361	440	396
W. SPRINGFIELD	River St.	S/O Roanoke Ave.	8896	394	416	464	510
W. SPRINGFIELD	Main St.	S/O Bridge St.	8965	270	359	333	375
W. SPRINGFIELD	Agawam Ave.	N/O Railroad Tracks	8971	42	19	60	19
W. SPRINGFIELD	Day Ave.	W/O Union St.	9049	30	27	36	44
WESTFIELD	Feeding Hills Rd	E/O Old Feeding Hills Rd.	9497	260	280	474	331
WESTFIELD	Mill St.	S/O Court St.	2174	148	154	179	174
WESTFIELD	High St.	N/O Court St.	2175	82	98	114	114
WESTFIELD	Shaker Rd.	S/O Little River Rd. (rte 187)	2176	351	246	298	430
WESTHAMPTON	Stage Rd.	W/O Easthampton Rd.	2077	14	19	23	18
WILLIAMSBURG	Mountain St.	@ Whatley T. L.	7114	66	48	66	84
WILLIAMSBURG	Ashfield Rd.	@ Conway T.L.	8037	12	38	52	22

Source: Pioneer Valley Planning Commission 2009

AUTOMATIC TRAFFIC RECORDER DATA SHEET

Figure 5 illustrates an example of a raw traffic count. The figure shows volumes at every hour for each direction, including totals for each day, throughout the count period. Also shown is the week average, daily percent of the average by direction, daily peak hours, and the week average peak hours. Volumes in different formats are available by contacting the PVPC. Information on vehicle travel speed, classification, and gap size is available for selected locations as well.

Figure 5

Page 1

Pioneer Valley Planning Commission

Location : Pelham
 Operator : JB, AD
 Counter # : 1446
 Road Class: R5

26 Central Street, Suite 34
 West Springfield, MA 01089
 (413) 781-6045 / www.pvpc.org

Site Code: 2106
 Station ID:
 Amherst Road
 W/O Route 202
 Latitude: 0' 0.000 Undefined

Start Time	15-Oct-07		Tue		Wed		Thu		Fri		Sat		Sun		Week Average	
	WB	EB	WB	EB	WB	EB	WB	EB	WB	EB	WB	EB	WB	EB	WB	EB
12:00 AM	*	*	*	*	8	6	6	9	*	*	*	*	*	*	7	8
01:00	*	*	*	*	9	5	6	9	*	*	*	*	*	*	8	7
02:00	*	*	*	*	5	4	1	1	*	*	*	*	*	*	3	2
03:00	*	*	*	*	0	2	1	2	*	*	*	*	*	*	0	2
04:00	*	*	*	*	2	5	5	6	*	*	*	*	*	*	4	6
05:00	*	*	*	*	14	17	14	12	*	*	*	*	*	*	14	14
06:00	*	*	*	*	58	16	59	22	*	*	*	*	*	*	58	19
07:00	*	*	*	*	83	39	87	33	*	*	*	*	*	*	85	36
08:00	*	*	*	*	127	53	114	37	*	*	*	*	*	*	120	45
09:00	*	*	*	*	79	34	89	35	*	*	*	*	*	*	84	34
10:00	*	*	*	*	66	29	69	47	*	*	*	*	*	*	68	38
11:00	*	*	*	*	71	34	74	55	*	*	*	*	*	*	72	44
12:00 PM	*	*	58	48	56	42	*	*	*	*	*	*	*	*	57	45
01:00	*	*	58	55	59	54	*	*	*	*	*	*	*	*	58	54
02:00	*	*	56	56	47	65	*	*	*	*	*	*	*	*	52	60
03:00	*	*	59	89	58	95	*	*	*	*	*	*	*	*	58	92
04:00	*	*	61	114	74	130	*	*	*	*	*	*	*	*	68	122
05:00	*	*	63	100	56	108	*	*	*	*	*	*	*	*	60	104
06:00	*	*	56	89	51	87	*	*	*	*	*	*	*	*	54	88
07:00	*	*	41	55	43	57	*	*	*	*	*	*	*	*	42	56
08:00	*	*	33	35	29	56	*	*	*	*	*	*	*	*	31	46
09:00	*	*	20	40	30	29	*	*	*	*	*	*	*	*	25	34
10:00	*	*	10	39	11	28	*	*	*	*	*	*	*	*	10	34
11:00	*	*	7	14	12	21	*	*	*	*	*	*	*	*	10	18
Lane Day	0	0	522	734	1048	1016	525	268	0	0	0	0	0	0	1048	1008
	0		1256		2064		793		0	0	0	0	0		2056	
AM Peak Vol.					08:00 127	08:00 53	08:00 114	11:00 55							08:00 120	08:00 45
PM Peak Vol.			17:00 63	16:00 114	16:00 74	16:00 130									16:00 68	16:00 122
Comb. Total	0		1256		2064		793		0		0		0		2056	
ADT	ADT 2,064		AADT 2,064													

TRAFFIC COUNT SERVICES

This report contains a sampling of the data maintained by the Pioneer Valley Planning Commission. Additional statistics, as well as other traffic indicators such as peak hour, turning movement counts, travel speed studies, accident reports, vehicle classification counts, and pedestrian and bicycle counts are available by contacting the Pioneer Valley Planning Commission.

PVPC offers public and private organizations a reliable traffic counting service with state of the art monitoring equipment and traffic analysis capabilities. For more information, or to inquire about transportation, land use, demographic, mapping and economic data services and products, please contact:

Pioneer Valley Planning Commission
60 Congress Street
Springfield, MA 01104
Telephone: (413) 781-6045
Fax: (413) 732-2593
www.pvpc.org

AGAWAM

21 *Locations*

Station	Facility	Location	Route	2005	2006	2007	2008	2009
9461	Entrance/Exit to Heritage Hall Nursing Home	W/O Main St.	--				1,242	
9509	Garden Street	Btw. Poplar Street / Route 57 off ramp	--					2,966
9446	Main St.	@ CT S.L.	159				8,492	
9093	Main St.	Btw. Elm St. / School St.	159			15,319		
9459	Main St.	N/O Meadow St.	159				13,684	
9460	Main St.	S/O Meadow St.	159				13,993	
9458	Meadow St.	E/O Main St.	--				2,607	
9511	Mill Street	S/O Cooper Street	--					10,751
9510	Mill Street	S/O Tennis Road	--					5,943
8680	Pine St.	@ Connecticut S.L.	187				3,682	
2199	Poplar St.	N/O Shoemaker Ln.	--		2,918		2,553	
9388	River Rd.	Under Route 5 Overpass	--			9,983		
9513	Route 57 off Ramp	N/O Garden Street	--					1,829
9512	Route 57 off Ramp	S/O Mill Street	--					2,874
9099	South Westfield St.	@ Connecticut S.L.	--				1,211	
9508	South Westfield St.	Btw. South Westfield St. / Route 57	187					9,980
9443	South Westfield St.	S/O Pine St.	187				1,854	
8913	South Westfield St.	S/O Springfield St.	187				16,122	
9447	Suffield St.	@ CT S.L.	75				6,804	
9444	Tennis Rd.	Btw. Mill St. / Route 57 Ramp	--				2,095	
9442	Walnut St. Extension	S/O Springfield St.	147				4,626	

AMHERST		<i>19 Locations</i>							
Station	Facility	Location	Route	2005	2006	2007	2008	2009	
2112	Amity St.	W/O Lincoln Ave.	--	8,995		9,113		8,663	
2100	East Leverett Rd.	@ Leverett T.L.	--	2,140	2,006	2,205		1,836	
2122	East Pleasant St.	N/O Eastman Ln.	--	8,867	7,311	8,060	7,003	7,134	
2110	East Pleasant St.	S/O Eastman Ln.	--	10,206	9,385	10,510	9,703	9,314	
9309	Fearing St.	E/O North Pleasant St.	--		3,388				
2111	Henry St.	S/O Pine St.	--	3,041	2,884	2,849	2,913	3,048	
9174	Leverett Rd.	@ Leverett T.L.	--	1,227					
9173	Long Plain Rd.	@ Leverett T.L.	63	4,104					
2114	Massachusetts Ave.	W/O North Pleasant St.	--	10,324		11,520		9,806	
9308	North Pleasant St.	N/O Fearing St.	--		11,812				
9307	North Pleasant St.	S/O Fearing St.	--		12,323				
2113	Shays St.	W/O Middle St.	--	2,190		2,085		2,109	
2099	South East St.	S/O Shays St.	--		2,780		2,772		
2109	Strong St.	E/O East Pleasant St.	--	4,340		4,188		3,576	
9172	Sunderland Rd.	@ Sunderland T.L.	116	13,966					
9196	West St. (NB)	0.45 mi. S/O West Bay Rd.	116	4,923					
9194	West St. (NB)	1.1 mi S/O West Bay Rd.	116	4,741					
9195	West St. (SB)	0.45 mi. S/O West Bay Rd.	116	5,002					
9193	West St. (SB)	1.1 mi. S/O West Bay Rd.	116	5,013					

BELCHERTOWN		<i>10 Locations</i>							
Station	Facility	Location	Route	2005	2006	2007	2008	2009	
9379	Bay Rd.	E/O Harris Way	--			5,486			
8947	Chestnut Hill School Driveway	S/O State St. (Route 202/21)	--		1,803				
9317	Police Station Driveway	N/O State St. (Route 202/21)	--		1,459				
9312	Stadler St.	N/O State St. (Route 202/21)	--		1,026				
9313	Stadler St.	S/O State St. (Route 202/21)	--		1,441				
9310	State St.	E/O Stadler St.	202/21		12,385				
9318	State St.	W/O Police Station Driveway	202/21		11,074				
9311	State St.	W/O Stadler St.	202/21		11,769				
9319	State St.	W/O Turkey Hill Rd. (Route 21)	202		6,515				
9320	Turkey Hill Rd.	S/O State St. (Route 202)	21		5,715				

BLANDFORD		<i>4 Locations</i>							
Station	Facility	Location	Route	2005	2006	2007	2008	2009	
9345	Beech Hill Rd.	S/O Otis Stage Rd. (Route 23)	--		167				
9097	North Blandford Rd.	@ Otis T.L.	--					218	
9098	Otis - Tolland Rd.	@ Otis T.L.	--					1,029	
8961	Otis Stage Rd.	@ Otis T.L.	23					1,411	

BRIMFIELD		<i>8 Locations</i>			2005	2006	2007	2008	2009
Station	Facility	Location	Route						
8007	Brookfield Rd.	@ Warren T.L.	--	1,032				1,292	
9281	Brookfield Rd.	N/O North Main St.	--		2,600				
9270	Main St.	W/O Warren Rd.	20		7,216				
9269	North Main St.	W/O Wales St. (Route 19)	19		1,930				
8005	Sturbridge Rd.	@ Sturbridge T.L.	20	9,754				8,766	
9271	Sturbridge Rd.	E/O Brookfield Rd.	20		8,175				
9277	Wales Rd.	S/O Main St.	19		2,240				
8006	Warren Rd.	@ Warren T.L.	19	1,513				1,238	

CHESTER		<i>4 Locations</i>			2005	2006	2007	2008	2009
Station	Facility	Location	Route						
8983	Huntington Rd.	@ Huntington T.L.	20			2,610	2,353		
1130	Huntington Rd.	E/O Middlefield Rd.	20		2,641	2,844	2,628		
8984	West Main St.	@ Becket T.L.	20			1,978	1,703		
1132	West Main St.	W/O Middlefield Rd.	20	1,972		2,176		2,034	

CHESTERFIELD		<i>2 Locations</i>			2005	2006	2007	2008	2009
Station	Facility	Location	Route						
9138	East St.	E/O Curtis Rd.	--	624					
9137	East St.	W/O Stage Rd.	--	307					

CHICOPEE		<i>8 Locations</i>			2005	2006	2007	2008	2009
Station	Facility	Location	Route						
9139	Chicopee St.	N/O Grattan St. (Route 141)	116/141	8,119					
9140	Chicopee St.	S/O Grattan St. (Route 141)	116	9,160					
9142	Ferry St.	W/O Chicopee St. (Route 116/141)	--	695					
9141	Grattan St.	E/O Chicopee St. (Route 116/141)	141	3,669					
2234	Prospect St.	W/O Buckley Blvd.	--		13,060		16,812		
9248	Shawnigan Dr.	E/O Exit 6 off 291	--		10,199				
9249	Shawnigan Dr.	W/O Exit 6 off 291	--		13,268				
2140	Syrek St.	@ South Hadley T.L.	--	7,177		7,346		6,816	

CUMMINGTON 10 <i>Locations</i>									
Station	Facility	Location	Route	2005	2006	2007	2008	2009	
9324	Berkshire Tr.	@ Goshen T.L.	9/112		3,388				
9323	Berkshire Tr.	E/O Bryant Rd. (Route 112)	9/112		3,483				
9521	Berkshire Trail (Route 9)	@ Windsor T.L.	9						2,829
9322	Bryant Rd.	W/O Four Corners	--		39				
9448	Cole St.	@ Windsor T.L.	143				427		
9331	Grout Rd.	E/O Four Corners	112		351				
2068	Main St.	N/O Berkshire Tr. (Route 9/112)	--		767		739		
9096	Savoy St.	@ Windsor T.L.	--				130		
2067	West Cummington Rd.	S/O Berkshire Tr. (Route 9)	--		110		140		
9321	West Cummington Rd.	S/O Four Corners	112		373				

EAST LONGMEADOW 4 <i>Locations</i>									
Station	Facility	Location	Route	2005	2006	2007	2008	2009	
2178	Porter Rd.	W/O Allen St.	--	6,553		6,772			6,955
7061	Prospect St.	@ Connecticut S.L.	186				2,461		
7071	Shaker Rd.	@ Connecticut S.L.	220				9,464		
7069	Somers Rd.	@ Connecticut S.L.	83				3,283		

EASTHAMPTON			<i>30 Locations</i>					
Station	Facility	Location	Route	2005	2006	2007	2008	2009
9398	Coleman Rd.	E/O Main St. (Route 10)	--			1,880		
2119	East St.	N/O Holyoke St.	--	3,282	3,657		3,769	
2121	Everett St.	E/O Adams St.	--	2,261		2,726		1,887
2117	Ferry St.	E/O Lovefield St.	--		6,528		6,875	
9403	Florence St.	W/O Northampton St. (Route 10)	--			7,918		
9408	Glendale St.	W/O Main St. (Route 10)	--			3,607		
9409	Greenwood Ct.	E/O Main St. (Route 10)	--			995		
9213	Hendrick St.	W/O Mountain Rd. (Route 141)	--	3,562				
2118	Loudville Rd.	E/O Torrey St.	--	3,726		3,793		3,591
9407	Main St.	Btw. Payson Ln. / Center St.	10			12,555		
7539	Main St.	N/O Union St. (Route 141)	10			26,542		
9399	Main St.	N/O Wemelco Way	10			10,463		
11004	Manhan Rail Trail	W/O Payson St.	--				495	841
11003	Manhan Rail Trail	W/O Union Street	--			519		
2120	Mountain Rd.	@ Holyoke C.L.	141	13,962				
9215	Mountain Rd.	S/O Hendrick St	141	14,414				
9404	Northampton St.	Btw. Groveland St. / Highland Ave.	10			19,211		
9401	Northampton St.	Btw. Highland Ave. / Lyman St.	10			13,549		
9402	Northampton St.	N/O O'Neill St.	10			13,223		
9291	Northampton St.	N/O West St.	10		19,142			
9289	Northampton St.	S/O O'Neill St.	10		13,375			
9413	Northampton St.	W/O Lyman Ave.	10			19,159		
9290	O'Neill St.	E/O Northampton St. (Route 10)	--		4,840			
9410	Park St.	Btw. Center St. / Payson Ln.	--			6,503		
2116	Park St.	S/O South St.	--	7,144		7,821		6,965
9411	Pleasant St.	E/O Summer St.	--			6,912		
9397	South St.	E/O Main St. (Route 10)	--			2,685		
2115	South St.	W/O Main St. (Route 10)	--	1,971	1,858	2,076	1,825	1,729
7543	Union St.	E/O Main St. (Route 10)	141			14,015		
9292	West St.	W/O Northampton St. (Route 10)	--		4,262	4,094		

GOSHEN			<i>7 Locations</i>					
Station	Facility	Location	Route	2005	2006	2007	2008	2009
9330	Berkshire Trail West	W/O Cape St. (Route 112)	9/112		3,914			
7059	Cape St.	@ Ashfield T.L.	112	1,644			1,398	
9360	Cape St.	Btw. Cemetery Rd. / Moore Hill Rd.	112			1,617		
9325	Cape St.	N/O Berkshire Tr. West (Route 9/112)	112		1,607			
9495	East St.	W/O Highland Rd.	--				313	
9449	Spruce Corner Rd.	@ Ashfield T.L.	--				52	
2072	West St.	S/O Main St. (Route 9)	--		796		786	

GRANBY		20 <i>Locations</i>						
Station	Facility	Location	Route	2005	2006	2007	2008	2009
9426	Amherst St.	S/O Route 116	--				5,059	
9191	Amherst St. (NB)	0.3 mi. N/O Amherst St.	116	4,790				
9192	Amherst St. (SB)	0.3 mi. N/O Amherst St.	116	5,007				
9429	Burnett Rd.	Btw. West St. / Route 116	--				529	
9372	Carver St.	Btw. Taylor St. / Meadow Glen Dr.	--			4,970		
9434	Chicopee St.	S/O Route 202					1,721	
9433	East St.	E/O Sherwood Dr.					8,418	
9424	Fred Ruel Rd.	@ Belchertown T.L.	--				1,261	
9430	Harris St.	Btw. Batchelor St. / Belchertown T.L.	--				693	
9170	Morgan St.	S/O East St.	--	2,166				
9432	New Ludlow Rd.	W/O Morgan St.					7,610	
9428	Pleasant St.	E/O High St.	--				3,114	
9423	Route 116	W/O Amherst St.	116				6,058	
9420	Route 202	E/O North St.	202				9,669	
9418	Route 202	E/O School St.	202				6,729	
9419	Route 202	W/O School St.	202				8,680	
9422	School St.	N/O Rt. 202	202				3,537	
9421	School St.	S/O Route 202	202				2,221	
9427	Taylor St.	@ Ludlow T.L.	--				5,621	
9431	Turkey Hill Rd.	Btw. Baggs Hill Rd. / Belchertown T.L.					805	

GRANVILLE		5 <i>Locations</i>						
Station	Facility	Location	Route	2005	2006	2007	2008	2009
7063	Granby Rd.	@ Connecticut S.L.	189				703	
9368	Main Rd.	E/O Granby Rd. (Route 189)	57			3,087		
9373	Main Rd.	W/O Barnard Rd.	57			1,820		
9451	North Lane	N/O Main Rd.	57				298	
9156	West Hartland Rd.	@ Connecticut S.L.	--	103				

HADLEY		3 <i>Locations</i>						
Station	Facility	Location	Route	2005	2006	2007	2008	2009
2104	Mill Valley Rd.	E/O Russell St.	--		1,496		1,458	
2102	North Maple St.	S/O Mt. Warner Rd.	--	7,932		8,723		9,566
8307	Russell St.	E/O Coolidge Bridge	9	39,527				

HAMPDEN		<i>6 Locations</i>			2005	2006	2007	2008	2009
Station	Facility	Location	Route						
9394	Allen St.	W/O Stony Hill Rd.	--			5,588			
9389	Main St.	E/O Somers Rd.	--			7,359			
9390	Mill Rd.	W/O Somers Rd.	--			2,233			
2227	Somers Rd.	@ Connecticut S.L.	--		1,848		2,056		
2208	Somers Rd.	S/O Main St.	--		5,203		5,621		
9391	Stony Hill Rd.	N/O Allen St.	--			2,803			

HATFIELD		<i>9 Locations</i>			2005	2006	2007	2008	2009
Station	Facility	Location	Route						
9136	Chestnut St.	E/O Prospect St.	--	1,214					
9135	Chestnut St.	W/O Prospect St.	--	1,335					
9229	Elm St.	E/O Dwight St.	--		4,041				
9171	Main St.	@ Whately T.L.	--	1,442				1,362	
9522	Pantry Rd.	@ Whatley T.L.	--					975	
9134	Prospect St.	N/O Chestnut St.	--	1,534					
9133	Prospect St.	S/O Chestnut St.	--	1,045					
8016	Straits Rd.	@ Whately T.L.	--					446	
7066	West St.	@ Whately T.L.	5/10					4,562	

HOLLAND		<i>4 Locations</i>			2005	2006	2007	2008	2009
Station	Facility	Location	Route						
9267	Brimfield Rd.	N/O Stafford Rd.	--		1,208				
9523	Leno Rd.	@ Sturbridge T.L.	--					622	
7078	Mashapaug Rd.	@ Connecticut S.L.	--					1,515	
7302	Sturbridge Rd.	@ Sturbridge T.L.	--	1,939				1,885	

HOLYOKE		<i>13 Locations</i>			2005	2006	2007	2008	2009
Station	Facility	Location	Route						
2126	Cabot St.	E/O High St.	--	8,522		6,169		6,810	
9386	Dwight St.	W/O Northampton St. (Route 5)	141			10,758			
8717	Hampden St.	E/O Arlington St.	141			11,342			
9415	High St.	S/O Resnic Blvd.	--			8,565			
9439	Homestead Ave.	N/O Mayer Dr.	--				13,934		
2128	Jackson St.	W/O Main St.	--		4,591		5,577		
9518	Lower Westfield Rd.	W/O Holyoke St.	--	21,974		22,594		22,814	
2123	Lower Westfield Rd.	W/O I-91	--		14,708		17,188		
2124	Lower Westfield Road	W/O Ingleside Street	--					3,563	
9414	Maple St.	S/O Resnic Blvd.	--			8,873			
9416	Old Jarvis Ave.	W/O Scott Hollow Dr.	--			1,302			
9190	Southampton Rd.	W/O Easthampton Rd. (Route 141)	--	4,747					
9302	Westfield Rd.	Homestead Ave. (Route 202)	202		16,815				

HUNTINGTON		<i>9 Locations</i>						
Station	Facility	Location	Route	2005	2006	2007	2008	2009
9246	Cook Hill Rd.	N/O Old Chester Rd.	--		558			
9326	East Main St.	N/O Basket St.	112		4,671			
9143	Harlow Clark Rd.	S/O County Rd.	--	183				
8948	Laurel Rd.	W/O East Main St. (Route 112)	20			4,247	4,333	
9244	Old Chester Rd.	E/O Cook Hill Rd.	--		648			
9245	Old Chester Rd.	W/O Cook Hill Rd.	--		205			
9329	Worthington Rd.	@ Worthington T.L.	112		1,313			
8950	Worthington Rd.	N/O Pond Brook Rd. (Route 66)	112		1,680			
8951	Worthington Rd.	S/O County Rd.	112		3,613			

LONGMEADOW		<i>8 Locations</i>						
Station	Facility	Location	Route	2005	2006	2007	2008	2009
9515	Converse St.	E/O Laurel St.	--					16,004
9514	Converse St.	W/O Laurel St.	--					11,817
2179	Dwight Rd.	@ Springfield T.L.	--		9,092		8,357	
9380	Emerson Rd.	W/O Anthony Rd.	--			368		
9516	Laurel St.	N/O Converse St.	--					12,225
9517	Laurel St.	S/O Converse St.	--					6,293
7054	Longmeadow St.	@ Connecticut S.L.	5					11,750
7065	Shaker Rd.	@ Connecticut S.L.	192				3,695	

LUDLOW		<i>20 Locations</i>						
Station	Facility	Location	Route	2005	2006	2007	2008	2009
9534	Cady St.	@ Chicopee C.L.	--					3,101
9537	Center St.	@ Belchertown T.L.	21					4,691
9378	Center St.	N/O Sewall St.	21			21,285		
9538	Center St.	N/O Stivens Terr.	21					15,667
9377	Center St.	S/O Sewall St.	21			14,431		
9539	Center St.	S/O Windsor St.	21					15,602
9544	Chapin St.	E/O Chapin Circle	--					11,853
9543	Cherry St.	Btw. Cady St. / Center St.	--					6,195
9540	Church St.	Btw. Center St./ Munsing St.	--					3,834
9542	East St.	E/O Seawall St.	--					12,145
9536	Fuller St.	S/O Pinecone Ln.	--					3,553
9533	Holyoke St.	@ Chicopee C.L.	--					14,470
9535	Kendall St.	E/O Holy Cross Circle	--					4,089
9541	Miller St.	S/O Chapin St.	--					7,846
9545	Moore St.	S/O Center St.	--					977
9546	Poole St.	E/O Alden St.	--					1,557
9376	Sewall St.	E/O Center St. (Route 21)	--			6,602		
9531	West St.	S/O Nash Hill Rd.	--					10,066
9532	West St.	S/O Shawinigan Dr.	--					9,392
9547	Windsor St	E/O Center St	--					3,428

MIDDLEFIELD 1 *Locations*

Station	Facility	Location	Route	2005	2006	2007	2008	2009
9452	Skyline Trail	@ Peru T.L.	--				566	

MONSON 8 *Locations*

Station	Facility	Location	Route	2005	2006	2007	2008	2009
3244	High St.	W/O Main St. (Route 32)	--	3,907		3,774		4,003
9250	Lower Hampden Rd.	Btw. Bogan Rd. / Highland Ave.	--		549			
9251	Lower Hampden Rd.	S/O Ely Rd.	--		888			
3243	Main St.	E/O High St.	32	9,687		10,636		10,607
9498	Main St.	N/O Harrison Ave.	32					8,433
8023	Moulton Hill Rd.	@ Connecticut S.L.	--					215
6059	Stafford Rd.	@ Connecticut S.L.	32	1,953				1,787
8283	Wales Rd.	E/O Main St. (Route 32)	--			2,532		

MONTGOMERY 3 *Locations*

Station	Facility	Location	Route	2005	2006	2007	2008	2009
9503	Carrington Rd.	N/O Thomas Rd.	--					573
9502	Carrington Rd.	S/O Thomas Rd.	--					590
9144	Lambson Rd.	S/O Harlow Clark Rd.	--	115				

NORTHAMPTON 61 *Locations*

Station	Facility	Location	Route	2005	2006	2007	2008	2009
9352	Bliss St.	N/O Cross St.	--			1,747		
2093	Bridge Rd.	E/O North Main St. (Route 9)	--	10,019		9,719		9,753
9148	Burts Pit Rd.	E/O Florence Rd.	--	4,400				
9147	Burts Pit Rd.	W/O Florence Rd.	--	2,891				
2091	Chapel St.	S/O West St.	66		4,274		4,948	
2221	Clark Ave.	E/O New South St.	--	366		377		406
021422	Clement St.	N/O Burts Pit Rd.	--					2,628
021402	Cooke Ave.	E/O Hatfield St.	--				2,396	
021404	Cooke Ave.	W/O Hatfield Street	--				438	
9353	Cross St.	Btw. Florence Rd. / Bliss St.	--			642		
2095	Damon Rd.	E/O King St. (Route 5/10)	--		15,356		15,493	
021401	Day Ave.	W/O Bridge St.	--				1,952	
2089	Elm St.	W/O North Elm St. (Route 9)	--		7,552		7,087	
9504	Elm Street	E/O Paradise Street	9					15,848
9425	Exit 18 I-91 On Ramp	N/O Rt. 5	I-91				2,990	
9357	Florence Rd.	Btw. Cross St. / Scanlon Ave.	--			6,636		
9145	Florence Rd.	N/O Burts Pit Rd.	--	6,356				
9146	Florence Rd.	S/O Burts Pit Rd.	--	8,886				
9355	Florence Rd.	S/O Scanlon Ave.	--			6,347		
2087	Florence Rd.	S/O Spring St.	--	12,233		10,413		10,800
2086	Florence St.	W/O North Main St. (Route 9)	--	4,126	7,552	3,980		4,064
021411	Grove St.	E/O Chapel St.	--					620
9456	Hatfield St.	N/O Cooke Ave.	--				6,755	
9457	Hatfield St.	S/O Cooke Ave.	--				6,866	
021405	Holyoke St.	W/o Hawley St.	--					2,500
021417	Island Rd.	W/O Ferry Rd.	--					424
021419	Jackson St.	Btw. Barrett St. / Prospect St.	--					6,922
021407	Jackson St.	S/O Gleason Rd.	--					5,819
021406	Jackson St.	S/O Ridgewood Terr.	--					7,103
021418	Laruel St.	S/O Chapin St.	--					627
021403	Lincoln Ave.	Btw. Bridge St. / North St.	--				1,106	
9505	Locust Street	W/O Hatfield Street	9					17,561
90104	Look Park Entrance	W/O North Main St. (Route 9)	--			698		
90110	Look Park Exit	W/O North Main St. (Route 9)	--			482		
2096	Main St.	W/O Center St.	9	14,704		15,619		14,435
021420	Meadow St.	W/O Park St.	--					1,526
021408	North Elm St.	N/O Elm St.	--					11,424
2090	North Elm St.	S/O Bridge Rd.	--		1,607		1,591	
90102	North Main St.	N/O Bridge Rd.	9			16,423		
90103	North Main St.	S/O Bridge Rd.	9			10,588		
11000	Northampton Bikeway	N/O Chestnut St.	--	514		341		
11002	Norwottuck Rail Trail	E/O Damon Road	--			889		
021413	Pine St.	Btw. Chestnut St. / South Main St.	--					2,674
021414	Pine St.	E/O Bacon St.	--					3,680

NORTHAMPTON		61 Locations						
Station	Facility	Location	Route	2005	2006	2007	2008	2009
9375	Pine St.	W/O Nonotuck St.	--			11,014		
021421	Pomeroy Terr.	S/O Bridge St.	--					1,333
021425	Prospect Ave.	E/O Jackson St.	--					9,471
2220	Prospect St.	N/O Trumbull Rd.	--		1,047		1,013	
021424	Prospect St.	W/O Jackson St.	--					7,460
021410	Riverside Dr.	Btw. Ladd Ave. / Federal St.	--					3,148
021409	Riverside Dr.	E/O Ormond Dr.	--					3,115
9438	Rt. 9	E/O VAMC Entrance	9				17,713	
9437	Rt. 9	W/O VAMC Entrance	9				16,399	
9356	Ryan Rd.	Btw. Clark St. / Florence Rd.	--			6,003		
9354	Scanlon Ave.	Btw. Bliss St. / Florence Rd.	--			885		
2085	Spring St.	S/O Arch St.	--		1,526		1,768	
021423	State St.	Btw.Center St. / Main St.	--					7,384
2219	State St.	N/O Bright Ave.	--	10,219		9,709		8,867
9435	VAMC East Entrance	N/O Rt. 9	--				1,695	
9436	VAMC West Entrance	N/O Rt. 9	--				542	
021412	Williams St.	S/O Eastern St.	--					1,161

PALMER		8 Locations						
Station	Facility	Location	Route	2005	2006	2007	2008	2009
7080	Boston Rd.	@ Warren T.L.	67	4,821				4,589
9233	Mapletree Industrial Dr.	N/O Wilbraham St. (Route 20)	--		1,010			
9182	Ware St. (NB)	0.2 mi. N/O Gates St.	32	4,245				
9183	Ware St. (NB)	0.7 mi. N/O Gates St.	32	4,403				
9181	Ware St. (SB)	0.1 mi N/O Gates St.	32	5,898				
9184	Ware St. (SB)	Btw. Stimson St. / Gates St.	32	4,569				
9520	West Ware St.	@ Warren T.L.	--					2,628
9273	West Ware St.	S/O Bacon Rd.	--		2,848			

PELHAM		3 Locations						
Station	Facility	Location	Route	2005	2006	2007	2008	2009
2106	Amherst Rd.	W/O Daniel Shays Hwy. (Route 202)	--	1,761		2,056		2,082
9450	Buffam Rd.	@ Shutesbury T.L.	--				904	
2920	Daniel Shays Hwy.	@ Shutesbury T.L.	202	1,644			3,406	

PLAINFIELD		6 Locations						
Station	Facility	Location	Route	2005	2006	2007	2008	2009
7067	East Main St.	@ Ashfield T.L.	116	1,109			1,259	
7068	Hallockville Rd.	@ Hawley T.L.	8A	379			282	
9453	North St.	@Hawley T.L.	--				190	
2074	South Central St.	@ Cummington T.L.	--		457		556	
8024	West Main St.	@ Savoy T.L.	116	1,338			1,075	
9351	West Main St.	W/O Hallockville Rd. (Route 8A)	8A/116		1,111			

RUSSELL 3 <i>Locations</i>								
Station	Facility	Location	Route	2005	2006	2007	2008	2009
9219	Carrington Rd.	N/O Main St.	--	671				
9036	Huntington Rd.	N/O Main St.	20			5,421	5,497	
8054	Westfield Rd.	N/O Blanford Rd. (Route 23)	20			5,361	5,349	

SOUTH HADLEY 14 <i>Locations</i>								
Station	Facility	Location	Route	2005	2006	2007	2008	2009
9361	Abbey St.	E/O Memorial Dr. (Route 33)	--			1,597		
2223	Bridge St.	Btw. Main St. / Lamb St.	116	7,512		8,920		6,401
9527	College St.	S/O Leahey Ave.	116					12,905
2222	College St.	S/O Park St.	116				11,400	
2135	East St.	N/O Granby Rd. (Route 202)	--	1,809		2,027		1,819
2136	Gaylord St.	W/O Lamb St. (Route 116)	--	1,410		1,516		1,397
9526	Industrial Drive	E/O Old Lyman Rd.	--					729
9519	Morgan St.	Btw Mosier St. / Charon Terr.	--					4,107
9524	New Ludlow Rd.	@ Chicopee C.L.	--					8,361
9362	Old Lyman Rd.	E/O Willimansett St. (Route 33)	--			4,140		
9525	Old Lyman Rd.	N/O New Ludlow Rd	--					3,041
2134	Silver St.	@ Granby T.L.	--	1,265		1,342		1,223
9365	Willimansett St.	N/O Old Lyman St.	33			17,118		
9363	Willimansett St.	S/O Old Lyman Rd.	33			16,074		

SOUTHWICK

35 *Locations*

Station	Facility	Location	Route	2005	2006	2007	2008	2009
9286	Coes Hill Rd.	W/O College Hwy. (Route 10/202)	--		1,085			
9305	College Hwy.	N/O Coes Hill Rd.	10/202		14,490			
9234	College Hwy.	N/O Congamond Rd.	10/202		10,048			
9260	College Hwy.	N/O Sawmill Park	10/202		10,743			
9262	College Hwy.	N/O Sunnyside Rd.	10/202		10,776			
9264	College Hwy.	N/O Tannery Rd.	10/202		13,216			
9287	College Hwy.	S/O Coes Hill Rd.	10/202		15,238			
9282	College Hwy.	S/O Congamond Rd.	10/202		8,278			
9295	College Hwy.	S/O Summerhouse Entrance #1	10/202		15,570			
9304	College Hwy.	S/O Tannery Rd.	10/202		14,062			
9261	College Hwy.	S/O Wynnfield Estates	10/202		10,799			
9285	Congamond Rd.	E/O College Hwy. (Route 10/202)	--		5,043			
9337	Depot St.	Btw. Sheep Pasture Rd./ Powder Mill Rd.	--		5,753		5,707	3,821
2242	Depot St.	E/O College Hwy. (Route 10/202)	--	9,098	8,027	8,933	8,593	7,845
9225	Feeding Hills Rd.	Btw. Rebecca Lobo Way / Hudson Drive	57		13,043		13,227	
9222	Feeding Hills Rd.	Btw. Rebecca Lobo Way / Powder Mill Rd.	57		13,674		13,950	
9529	Feeding Hills Rd.	E/O Foster Rd	57					10,990
9227	Feeding Hills Rd.	E/O Hudson Drive	57		13,100		12,872	
9528	Feeding Hills Rd.	W/O Foster Rd.	57					11,544
2168	Foster Rd.	S/O Feeding Hills Rd. (Route 57)	--	2,200		2,483		2,824
9293	Honeypot Rd.	N/O Southwick T.L.	--		124			
9294	Honeypot Rd.	S/O Southwick T.L.	--		277			
9226	Hudson Dr.	N/O Feeding Hills Rd. (Route 57)	--		1,645		1,635	
9224	Library Entrance	@ Rebecca Lobo Way	--		512		314	
9336	Lutheran Church Driveway	E/O College Hwy. (Route 10/202)	--		820	553		
9530	North Longyard St.	N/O Feeding Hills Rd.	--					4,832
9154	Point Grove Rd.	@ Connecticut S.L.	--	3,190				
9338	Powder Mill Rd.	N/O Depot St.	--		4,403			
9223	Rebecca Lobo Way	Feeding Hills Rd. (Route 57)	--		1,493		1,642	
9297	Sheep Pasture Rd.	S/O Depot St.	--		6,617		6,347	5,872
2261	South Longyard Rd.	S/O Depot St.	--		2,968		3,079	
11005	Southwick Rail Trail	@ Congamond Rd.	--					192
9263	Sunnyside Rd.	W/O College Hwy. (Route 10/202)	--		2,967			
9265	Tannery Rd.	E/O College Hwy. (Route 10/202)	--		1,929			
9284	Vining Hill Rd.	W/O College Hwy. (Route 10/202)	--		3,024			

SPRINGFIELD

35 *Locations*

Station	Facility	Location	Route	2005	2006	2007	2008	2009
2180	Armory St.	S/O Worthington St.	--	4,254		3,794		3,340
9501	Berkshire St.	N/O Cottage St.	--					11,452
9500	Berkshire St.	S/O Cottage St.	--					21,561
2188	Birchland Ave.	S/O Wilbraham Rd.	--			490		488
9342	Boston Rd.	Btw. Kent Rd. / Haymarket Square Entrance	--		21,906			
9344	Boston Rd.	W/O Parker St.	20		28,444			
2182	Boston Rd.	W/O Pasco Rd. (Route 20/20A)	--	27,169		24,417		25,545
11001	Connecticut Riverwalk and Bikeway	North of Riverfront Park	--	154				
9499	Cottage St.	W/O Berkshire St.	--					14,559
2189	Court St.	W/O Main St.	--		2,804		3,333	
2195	East Alvord St.	N/O Sumner Ave.	--		2,659		2,490	
9300	East Columbus Ave.	N/O Union St.	--		9,443			
9299	East Columbus Ave.	S/O Broad St.	--		10,684			
9240	Edgeland Rd.	Btw. Longhill Rd. / Fort Pleasant Ave.	--		854			
9197	Glenoak Dr.	N/O Wilbraham Rd.	--	1,928	1,702			
9494	Goodwin St.	N/O Page Blvd	--				3,554	
2194	Hickory St.	E/O Walnut St.	--	8,750	8,531	7,860	7,826	9,129
9241	Island Pond Rd.	Btw. Arcadia Blvd. / Overlook Dr.	--		14,173			
9235	Joan St.	W/O Spikehand Rd.	--		1,244			
9343	Kent Rd.	S/O Boston Rd. (Route 20)	--		3,484			
9239	Leete St.	Btw. Long Hill Rd. / Fort Pleasant Ave.	--		8,837			
2190	Longhill St.	S/O Sumner Ave.	83	26,271		22,584		
9237	Mallowhill Rd.	Btw. Senator St. / Barnet St.	--		1,867			
9198	Mallowhill Rd.	E/O Parker St.	--	1,887				
2799	Mill St.	E/O Pine St.	--		6,203		6,103	
9493	Page Blvd.	E/O Goodwin St.	20				13,887	
9492	Page Blvd.	W/O Goodwin St.	20				22,269	
2184	Pinevale St.	N/O Goodwin St.	--			529		668
2181	Riverside Rd.	N/O West St. (Route 20)	--					1,550
9243	Roosevelt Ave.	E/O Island Pond Rd.	--		9,388			
9242	Roosevelt Ave.	W/O Pondview Dr.	--		10,513			
9238	Scarsdale Rd.	Btw. Clydesdale Ln. / Sunbrier Rd.	--		1,328			
2193	South Branch Pkwy.	E/O Wildwood Ave.	--			2,440		2,682
2183	Tapley St.	W/O Bay St.	--		21,253		20,539	
9298	West Columbus Ave.	N/O Union Ave.	--		11,992			

TOLLAND

3 *Locations*

Station	Facility	Location	Route	2005	2006	2007	2008	2009
9455	New Boston Rd.	@ Sandisfield T.L.	57	878			721	
1141	North Main St.	@ Sandisfield T.L.	8				2,495	
9367	West Granville Rd.	E/O Hartland Rd.	57			986		

WALES								
4 Locations								
Station	Facility	Location	Route	2005	2006	2007	2008	2009
9017	Main St.	@ Brimfield T.L.	19			2,305		
9018	Main St.	S/O Holland Rd.	19			2,507		
9393	Monson Rd.	W/O Main St. (Route 19)	--			1,375		
7062	Stafford Rd.	@ Connecticut S.L.	19			852		

WARE								
16 Locations								
Station	Facility	Location	Route	2005	2006	2007	2008	2009
9395	Anderson Rd.	S/O Belchertown Rd. (Route 9)	--			1,606		
9151	Babcock Tavern Rd.	S/O Belchertown Rd. (Route 9)	--	626				
9396	Belchertown Rd.	E/O Babcock Tavern Rd.	9			5,865		
9252	Church St.	N/O Highland St.	--		3,110			
9253	Church St.	S/O Highland St.	--		2,993			
9152	East St.	@ West Brookfield T.L.	9/32	7,970				5,251
9149	Gilbertville Rd.	@ New Braintree T.L.	32	4,974				4,930
9153	Greenwich Rd.	@ Hardwick T.L.	--	1,299	826			
9258	Greenwich Rd.	N/O North St.	--		2,338			
9259	Greenwich Rd.	S/O North St.	--		1,928			
9254	Highland St.	W/O Church St.	--		864			
9256	North St.	N/O Highland St.	--		1,253			
9255	North St.	S/O Highland St.	--		1,321			
9150	Old Belchertown Rd.	@ Swift River Bridge	--	304				
9441	South St.	S/O Ware River Bridge	--				5,652	
9440	West Warren Rd.	@ Palmer T.L.	--				2,391	

WEST SPRINGFIELD 26 Locations

Station	Facility	Location	Route	2005	2006	2007	2008	2009
8971	Agawam Ave.	N/O Railroad Tracks	--					763
9207	Craiwell Ave.	S/O Westfield St. (Route 20)	--	1,179				
9049	Day St.	W/O Union St.	--					822
9204	Greystone Ave.	N/O Westfield St. (Route 20)	--	466				
9203	Hillcrest Ave.	S/O Westfield St. (Route 20)	--	1,049				
9199	Laurel Rd.	S/O Westfield St. (Route 20)	--	1,067				
9212	Lower Beverly Hills Rd.	N/O Westfield St. (Route 20)	--	549				
8965	Main St.	S/O Bridge St.	--					8,389
8969	Main St.	S/O Park Ave. (Route 20)	--			8,067		7,819
9200	Meadowbrook Ave.	S/O Westfield St. (Route 20)	--	461				
9208	Ohio St.	N/O Westfield St. (Route 20)	--	892				
2204	Pease Ave.	E/O Amostown Rd.	--	8,467		8,706		9,102
9202	Pilgrim Rd.	S/O Westfield St. (Route 20)	--	119				
8553	Poplar Ave.	S/O Westfield St. (Route 20)	--	767				
8809	Progress Ave.	S/O Park Ave.	--					416
8896	River St.	S/O Roanoke Ave.	--					11,844
9209	Rogers Ave.	N/O Westfield St. (Route 20)	--	3,061				
8811	Sylvan St.	S/O Park Ave.	--					650
9211	Tatham Hill Rd.	N/O Westfield St. (Route 20)	--	171				
8808	Union St.	N/O Bliss St.	--			11,607		10,901
8970	Union St.	N/O Bridge St.	--					9,650
8968	Union St. Ext.	S/O Memorial Ave. (Route 147)	--			5,089		6,369
8810	Western Ave.	S/O Park St.	--			2,251		2,353
9205	Westfield St.	E/O Craiwell Ave.	20	21,510				
9206	Westfield St.	W/O Ohio St.	20	20,286				
8552	Wolcott Ave.	N/O Westfield St.	--	471				

WESTFIELD

42 Locations

Station	Facility	Location	Route	2005	2006	2007	2008	2009
9480	Arnold St.	W/O Elm St.	--				2,289	
9476	Bartlett St.	E/O Elm St	--				1,280	
9485	Broad St.	S/O Court St.	--				8,064	
9477	Chapel St.	E/O Elm St.	--				859	
9470	Court St.	W/O Chestnut St.	--				11,307	
9315	East Main St.	E/O Meadow St.	20		15,085			
9187	East Mountain Rd.	S/O North Rd. (Route 202)	--	6,775				
9468	East Silver St.	W/O Cross St.	--				12,189	
9489	Elm St.	Btw. Franklin St. / Arnold St.	202				16,844	
9497	Feeding Hills Rd.	E/O Old Feeding Hills Rd.	187					8,826
9463	Franklin St.	W/O Berkshire Drive	20				16,868	
9490	Franklin St.	W/O Elm St.	20				16,000	
2175	High St.	N/O Court St.	--			3,228		2,421
2169	Holyoke Rd.	E/O North Elm St.	--		5,563		5,815	
9471	King St.	E/O Smith Ave.	--				2,424	
9481	Little River Rd.	S/O East Main St.	187				19,444	
9487	Main St.	E/O Free St.	20				18,242	
9474	Meadow St.	E/O Mechanic St.	--				6,819	
9473	Mechanic St.	S/O Bartlett St.	--				4,845	
2174	Mill St.	S/O Court St.	--	5,256		5,506		4,444
2173	Montgomery Rd.	S/O Crown St.	--		6,001		6,028	
9469	Noble St.	S/O Main St.	--				10,141	
9488	North Elm St.	N/O Columbia St	202				23,752	
9314	North Elm St.	N/O Pochassic St.	10/202		13,700			
9186	North Rd.	E/O Old County Rd.	10/202	16,811				
9188	North Rd.	W/O Old County Rd.	10/202	11,201				
9185	Old County Rd.	N/O North Rd. (Route 202)	--	3,586				
9484	Pleasant St.	S/O Court St.	202				7,062	
9496	Pochassic St.	W/O North Elm St.	--				6,554	
9479	School St.	W/O Elm St.	--				1,918	
2176	Shaker Rd.	S/O Little River Rd. (Route 187)	--	8,000		8,411		7,929
9482	South Broad St.	S/O West Silver St.	--				3,166	
9483	South Maple St.	S/O West Silver St.	202				13,358	
9486	South Meadow St.	S/O East Silver St.	--				176	
9491	Springfield Rd.	E/O Union St.	20				29,004	
9478	Thomas St.	E/O Elm St.	--				2,753	
9465	Union St.	N/O Springfield Rd.	--				16,145	
9472	Washington St.	S/O Arnold St.	--				5,326	
9467	West Silver St.	Btw. Pleasant St./ Broad St.	--				13,394	
9466	West Silver St.	W/O Noble Ave.	--				8,489	
9464	Western Ave.	E/O Granville Rd.	--				15,104	
9475	White St.	S/O East Bartlett	--				1,114	

WESTHAMPTON 2 *Locations*

Station	Facility	Location	Route	2005	2006	2007	2008	2009
9417	Hathaway Rd.	W/O North Rd.	--			189		
2077	Stage Rd.	W/O Easthampton Rd.	--	470		569		384

WILBRAHAM 12 *Locations*

Station	Facility	Location	Route	2005	2006	2007	2008	2009
9341	Boston Rd.	Btw. Stony Hill Rd. / Kent Rd.	20		18,928			
9340	Boston Rd.	W/O Home Depot Entrance	20		13,498			
9339	Boston Rd.	W/O Old Boston Rd.	20		15,049			
90108	Brainard Rd.	@ M.E.C.O. Pole # 3	--			1,736		
9230	Brainard Rd.	S/O Boston Rd. (Route 20)	--		1,742	1,494		
9158	Forest St.	S/O Boston Rd. (Route 20)	--	636				
9232	Glenn Dr.	W/O Jill Ln.	--		1,666	1,488		
9218	Glenn Dr.	W/O Lance Ln.	--	1,355		1,373		
9231	Grassy Meadow Rd.	E/O Whisper Walk	--		350			
2243	Monson Rd.	W/O Peak Rd.	--		3,583		3,383	
2238	North Main St.	Btw. Maple St. / Boston Rd.	--		5,733		6,047	
2215	River Rd.	@ Springfield C.L.	--		14,452		13,478	

WILLIAMSBURG 7 *Locations*

Station	Facility	Location	Route	2005	2006	2007	2008	2009
9445	Adams Rd.	W/O Wildlife Sanctuary	--				364	
8966	Main St.	E/O Petticoat Hill Rd.	9			11,949	10,924	
9370	Main St.	W/O Petticoat Hill Rd.	9			8,607	9,039	
7114	Mountain St.	@ Whately T.L.	--	1,741				1,593
9162	Nash Hill Rd.	@ Whately T.L.	--	65				
9462	North St.	N/O Main St.	--				2,102	
9371	Petticoat Hill Rd.	S/O Main St (Route 9)	--			397	372	

WORTHINGTON 4 *Locations*

Station	Facility	Location	Route	2005	2006	2007	2008	2009
9332	Clark Rd.	N/O Williamsburg Rd. (Route 112/143)	112		212			
9334	Huntington Rd.	S/O Old Post Rd.	112		1,288			
7052	Old North Rd.	@ Peru T.L.	143				538	
9333	Williamsburg Rd.	N/O North Rd. (Route 143)	112/143		1,288			



Catalyst for Regional Progress

PVPC

Pioneer Valley Planning Commission
60 Congress Street – Floor 1
Springfield, MA 01104-3418

www.pvpc.org