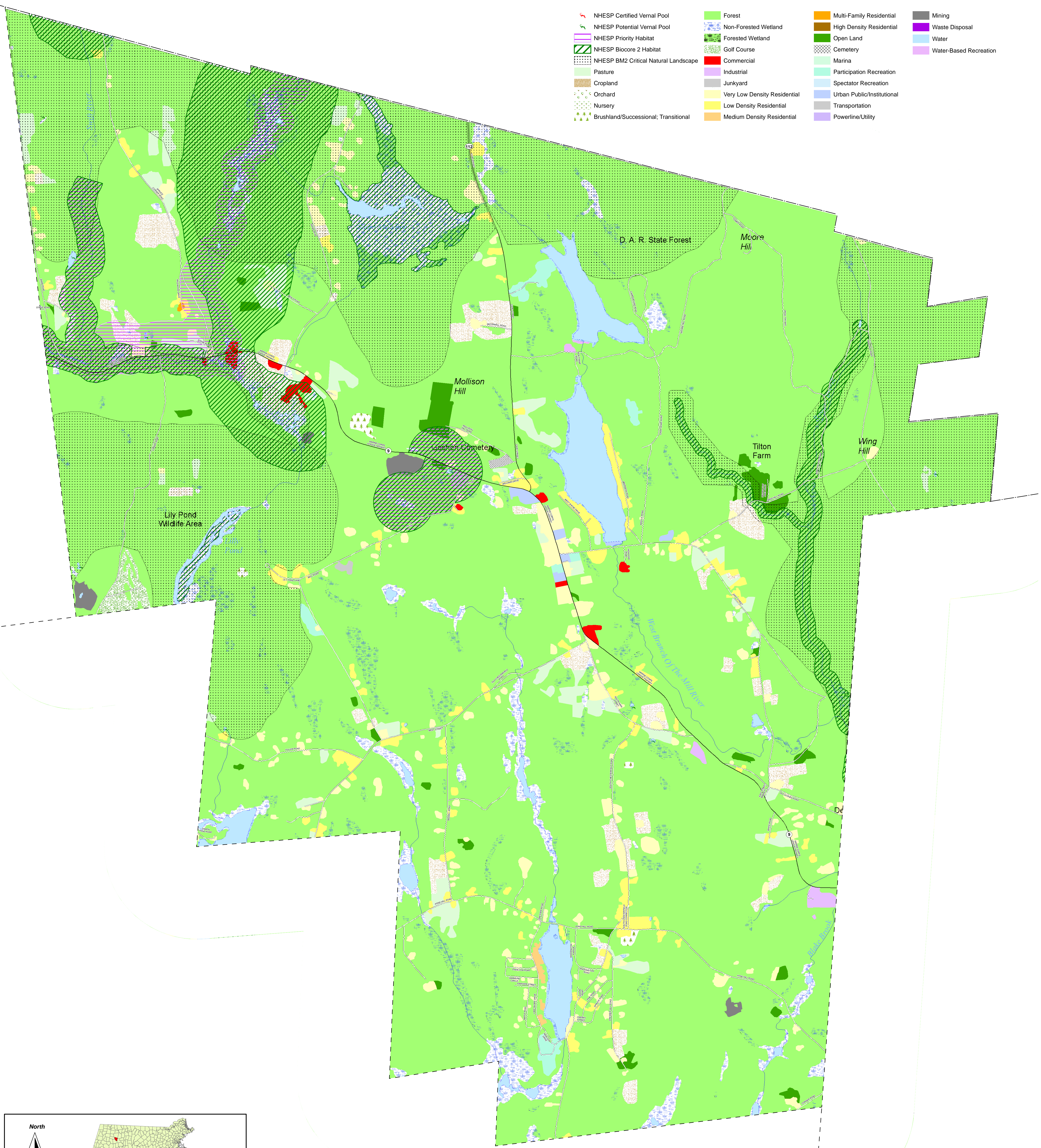


Goshen, Massachusetts Open Space Plan Natural Lands 2005 Landuse

- | | | | |
|--------------------------------------|------------------------------|----------------------------|----------------------------|
| NHESP Certified Vernal Pool | Forest | Multi-Family Residential | Mining |
| NHESP Potential Vernal Pool | Non-Forested Wetland | High Density Residential | Waste Disposal |
| NHESP Priority Habitat | Forested Wetland | Open Land | Water |
| NHESP Biocore 2 Habitat | Golf Course | Cemetery | Water-Based Recreation |
| NHESP BM2 Critical Natural Landscape | Commercial | Marina | Participation Recreation |
| Pasture | Industrial | Spectator Recreation | Urban Public/Institutional |
| Cropland | Junkyard | Transportation | Powerline/Utility |
| Orchard | Very Low Density Residential | Medium Density Residential | |
| Nursery | Low Density Residential | | |
| Brushland/Successional; Transitional | Medium Density Residential | | |



The information depicted on this map is for planning purposes only. It is not adequate for legal boundary definition, regulatory interpretation, or parcel-level analysis without proper field verification.

pypc Produced by the PIONEER VALLEY PLANNING COMMISSION
60 Congress Street - Floor 1 - Springfield, MA 01104-3409
413.781-6045 - www.pypc.org

