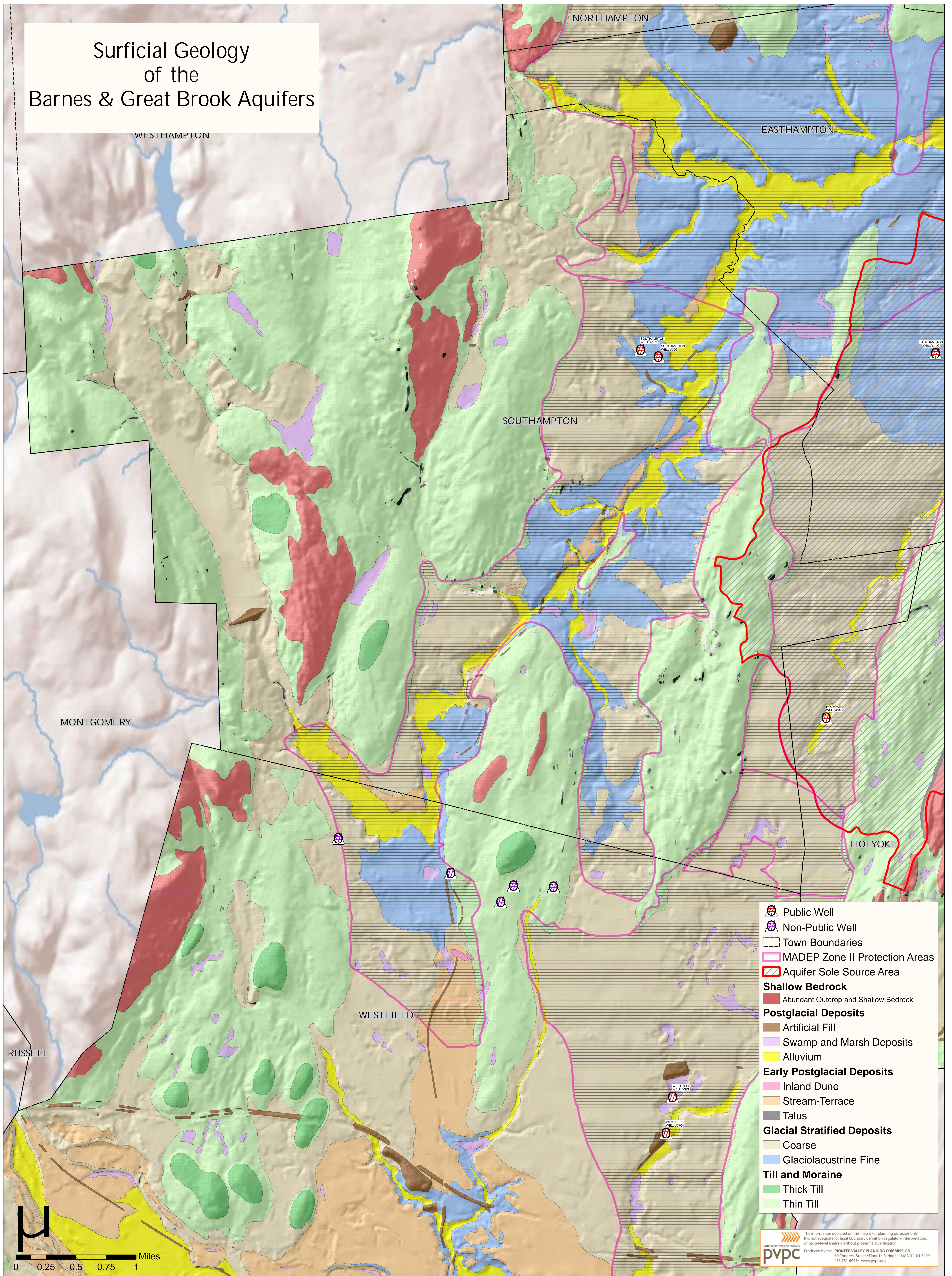


Surficial Geology of the Barnes & Great Brook Aquifers



- Public Well
- Non-Public Well
- Town Boundaries
- MADEP Zone II Protection Areas
- Aquifer Sole Source Area
- Shallow Bedrock**
 - Abundant Outcrop and Shallow Bedrock
- Postglacial Deposits**
 - Artificial Fill
 - Swamp and Marsh Deposits
 - Alluvium
- Early Postglacial Deposits**
 - Inland Dune
 - Stream-Terrace
 - Talus
- Glacial Stratified Deposits**
 - Coarse
 - Glaciolacustrine Fine
- Till and Moraine**
 - Thick Till
 - Thin Till

