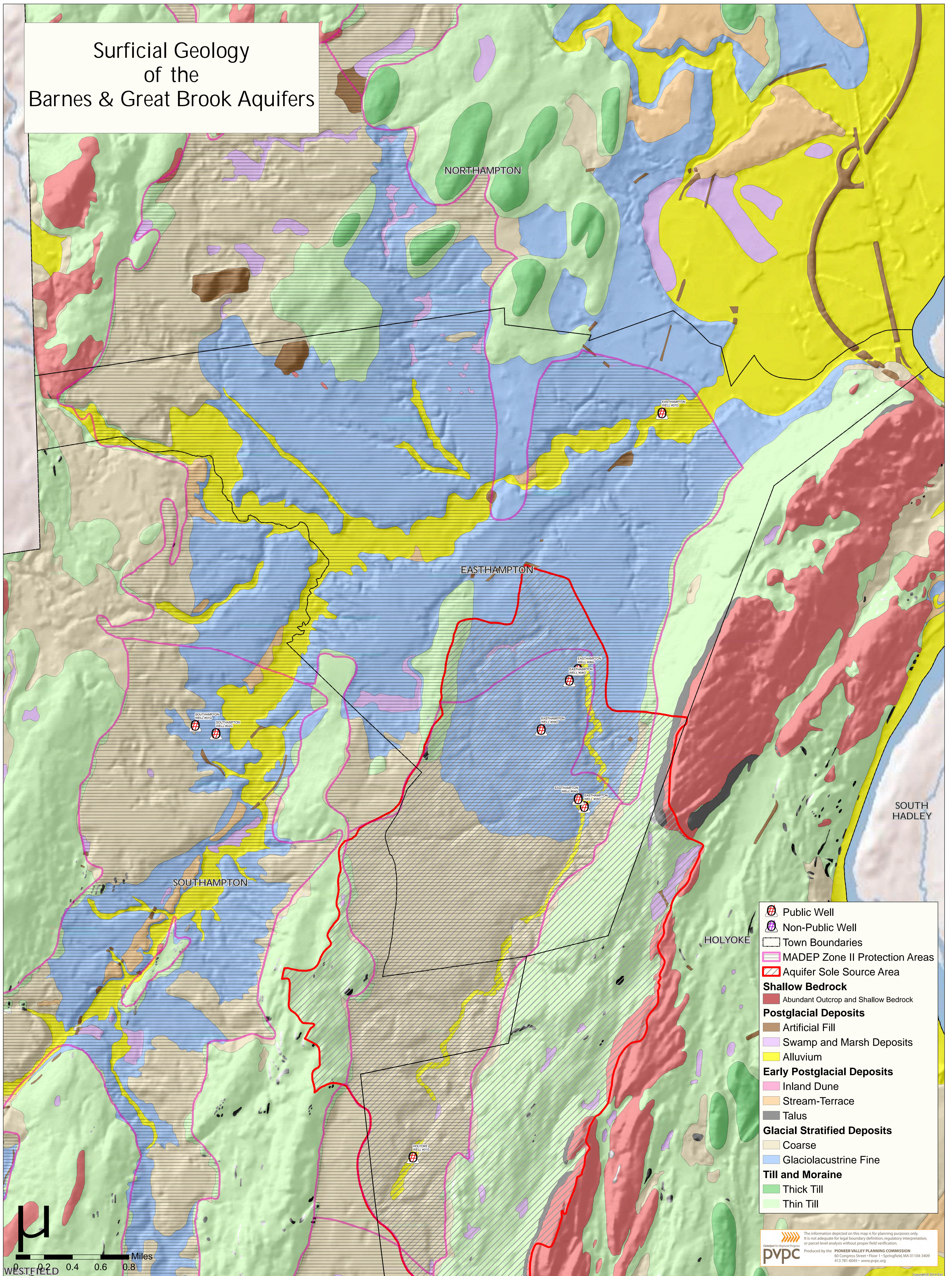


# Surficial Geology of the Barnes & Great Brook Aquifers



- Public Well
- Non-Public Well
- Town Boundaries
- MADEP Zone II Protection Areas
- Aquifer Sole Source Area
- Shallow Bedrock**
- Abundant Outcrop and Shallow Bedrock
- Postglacial Deposits**
- Artificial Fill
- Swamp and Marsh Deposits
- Alluvium
- Early Postglacial Deposits**
- Inland Dune
- Stream-Terrace
- Talus
- Glacial Stratified Deposits**
- Coarse
- Glaciolacustrine Fine
- Till and Moraine**
- Thick Till
- Thin Till

